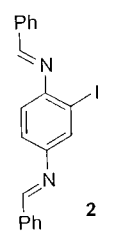
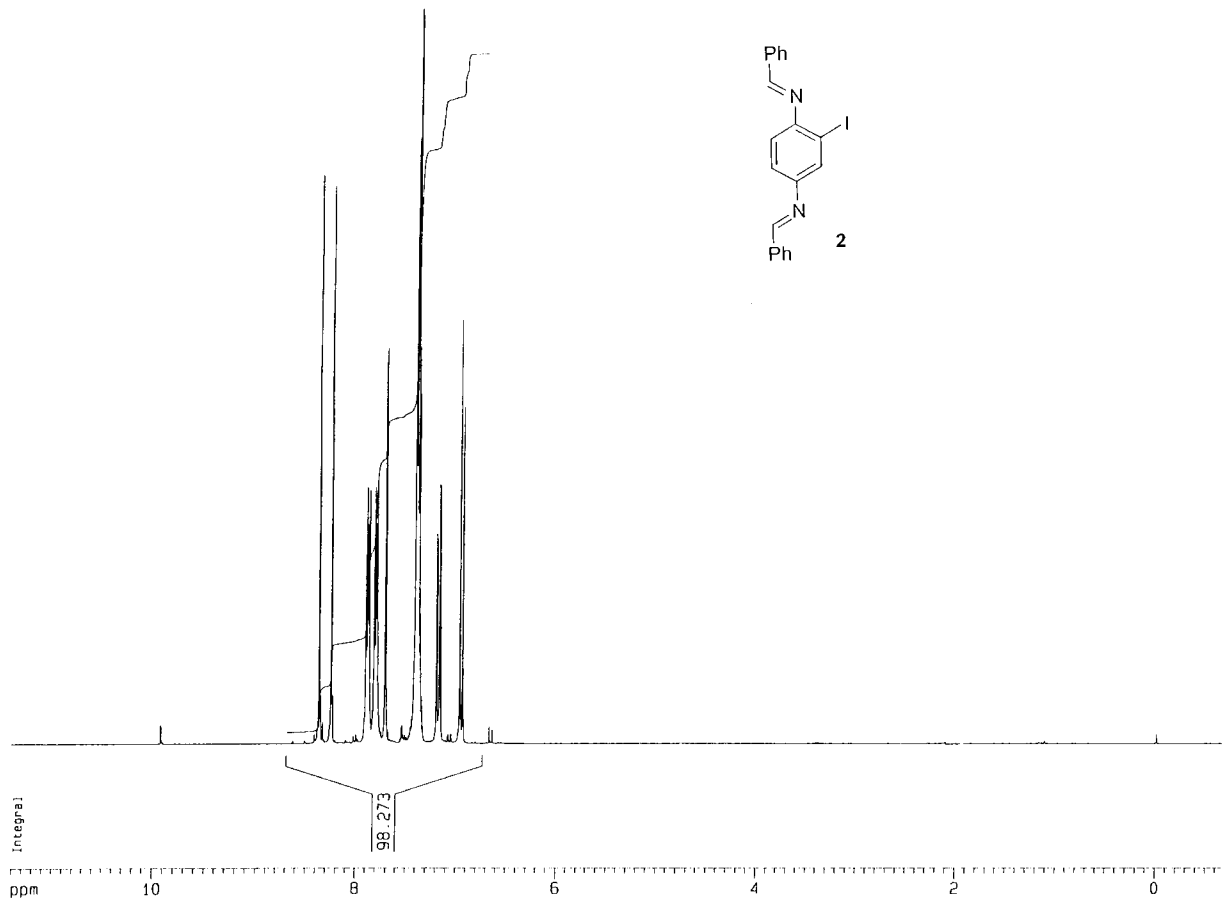


ppm

8.364
8.244
7.859
7.859
7.881
7.678
7.657
7.616
7.613
7.601
7.586
7.567
7.708
7.701
7.408
7.402
7.393
7.356
7.376
7.370
7.357
7.194
7.187
7.157
7.150
6.983
6.535



Arbeitskreis Knochel
User Jensen
Bruker ARX 300

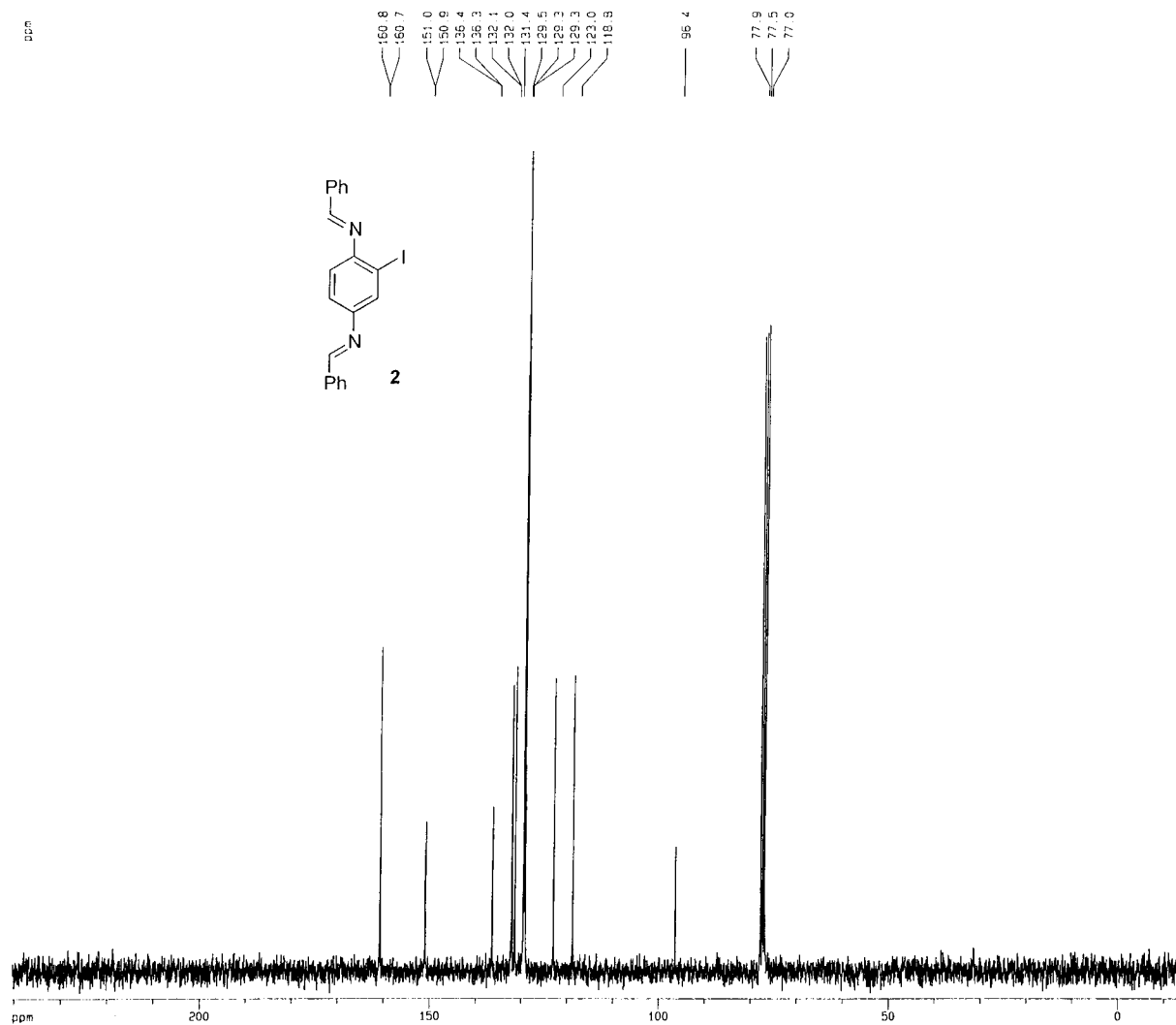
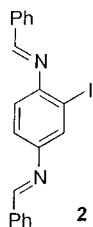
Current Data Parameters
USER jens
NAME aej1224
EXPNO 1
PROCNO 1

F2 - Acquisition Parameters
Date_ 20010321
Time 3.39
INSTRUM spect
PROBHD 5 mm QNP 1H
PULPROG zg30
TD 16384
SOLVENT CDCl3
NS 64
DS 2
SWH 3623.188 Hz
FIDRES 0.221142 Hz
AQ 2.2610421 sec
RG 256
DW 138.000 usec
DE 172.50 usec
TE 290.0 K
D1 2.00000000 sec
P1 10.20 usec
SFO1 300.1316507 MHz
NUCLEUS 1H

F2 - Processing parameters
SI 32768
SF 300.1300396 MHz
WDW EM
SSB 0
LB 0.10 Hz
GB 0
PC 4.00

1D NMR plot parameters
CX 21.50 cm
F1P 11.404 ppm
F1 3422.75 Hz
F2P -0.668 ppm
F2 -200.44 Hz
PPMCM 0.56149 ppm/cm
HZCM 158.52039 Hz/cm

ppm



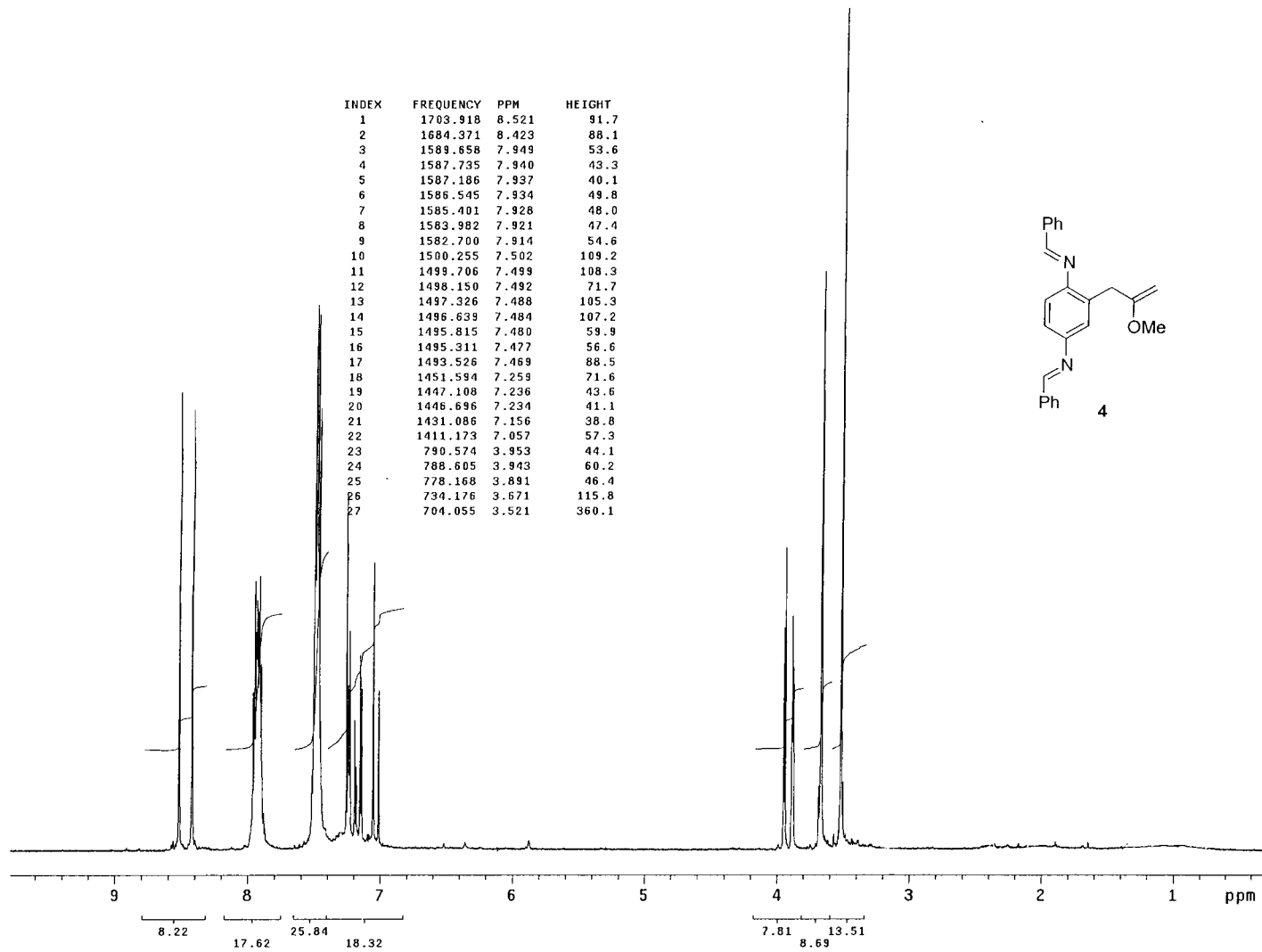
Arbeitskreis Knochel
User: Jensen
Bruker ARX 300

Current Data Parameters
USER: jens
NAME: aej1224
EXPNO: 2
PROCNO: 1

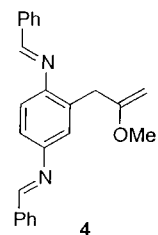
F2 - Acquisition Parameters
Date_: 20010321
Time: 3.46
INSTRUM: spect
PROBHD: 5 mm QNP 1H
PULPROG: zgpg30
TD: 65536
SOLVENT: CDCl3
NS: 128
DS: 2
SWH: 19230.770 Hz
FIDRES: 0.293438 Hz
AQ: 1.7039860 sec
RG: 16384
DM: 26.000 usec
DE: 32.50 usec
TE: 300.0 K
D12: 0.0002000 sec
DL6: 23.00 dB
D1: 1.5000000 sec
CPDPRG: waltz16
P31: 110.00 usec
O11: 0.0300000 sec
DL5: 20.00 dB
P1: 6.20 usec
SFO1: 75.4762456 MHz
NUCLEUS: 13C

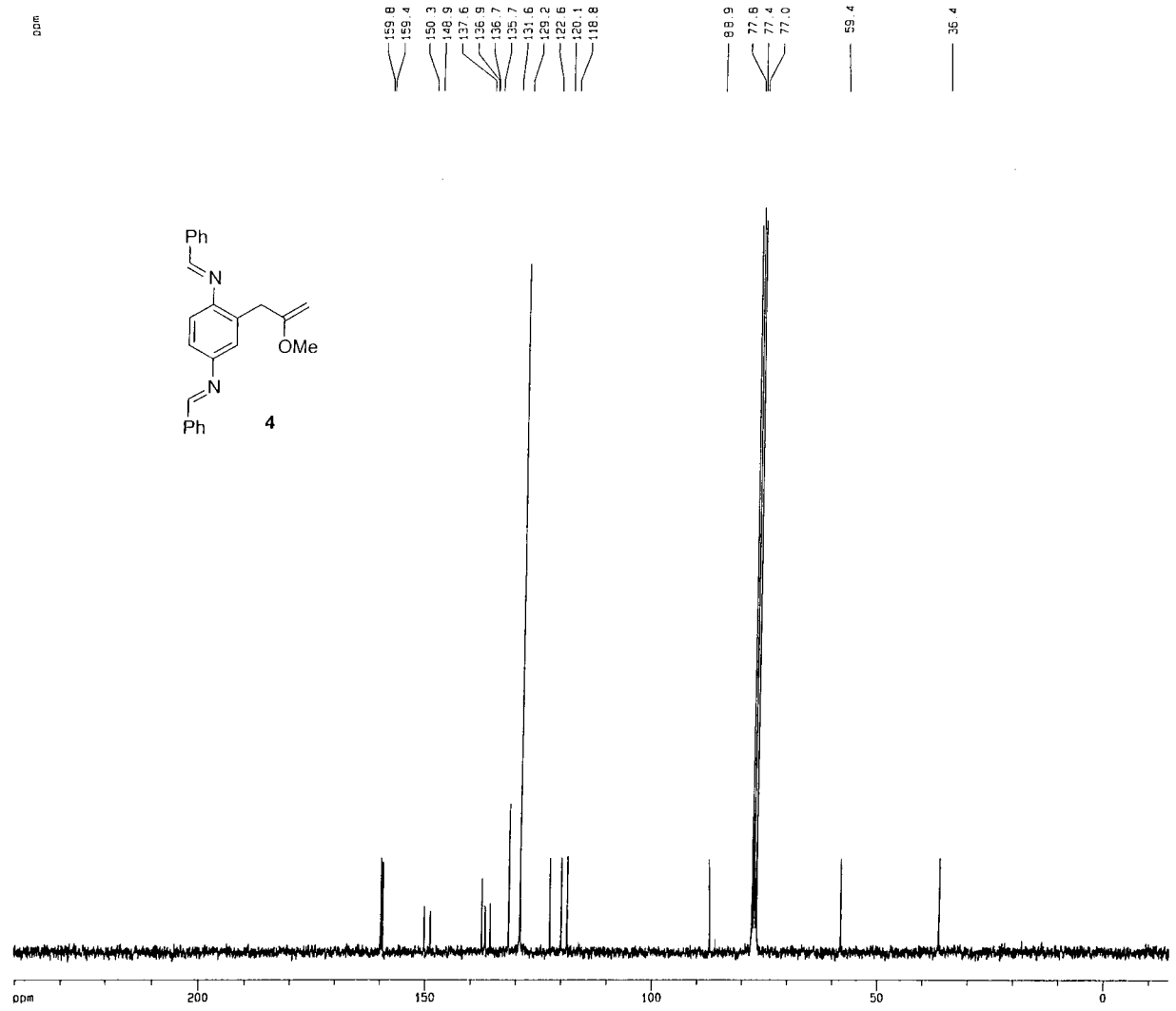
F2 - Processing parameters
SI: 65536
SF: 75.4677190 MHz
WDW: EM
SSB: 0
LB: 2.00 Hz
GB: 0
PC: 1.00

1D NMR plot parameters
CX: 21.50 cm
F1P: 240.379 ppm
F1: 18140.87 Hz
F2P: -14.442 ppm
F2: -1089.90 Hz
PPMCM: 11.85214 ppm/cm
HZCM: 894.45435 Hz/cm



INDEX	FREQUENCY	PPM	HEIGHT
1	1703.918	8.521	91.7
2	1684.371	8.423	88.1
3	1589.658	7.949	53.6
4	1587.735	7.940	43.3
5	1587.186	7.937	40.1
6	1586.545	7.934	49.8
7	1585.401	7.928	48.0
8	1583.982	7.921	47.4
9	1582.700	7.914	54.6
10	1500.255	7.502	109.2
11	1499.706	7.499	108.3
12	1498.150	7.492	71.7
13	1497.326	7.488	105.3
14	1496.639	7.484	107.2
15	1495.815	7.480	59.9
16	1495.311	7.477	56.6
17	1493.526	7.469	88.5
18	1451.594	7.259	71.6
19	1447.108	7.236	43.6
20	1446.696	7.234	41.1
21	1431.086	7.156	36.8
22	1411.173	7.057	57.3
23	790.574	3.953	44.1
24	788.605	3.943	60.2
25	778.168	3.891	46.4
26	734.176	3.671	115.8
27	704.055	3.521	360.1





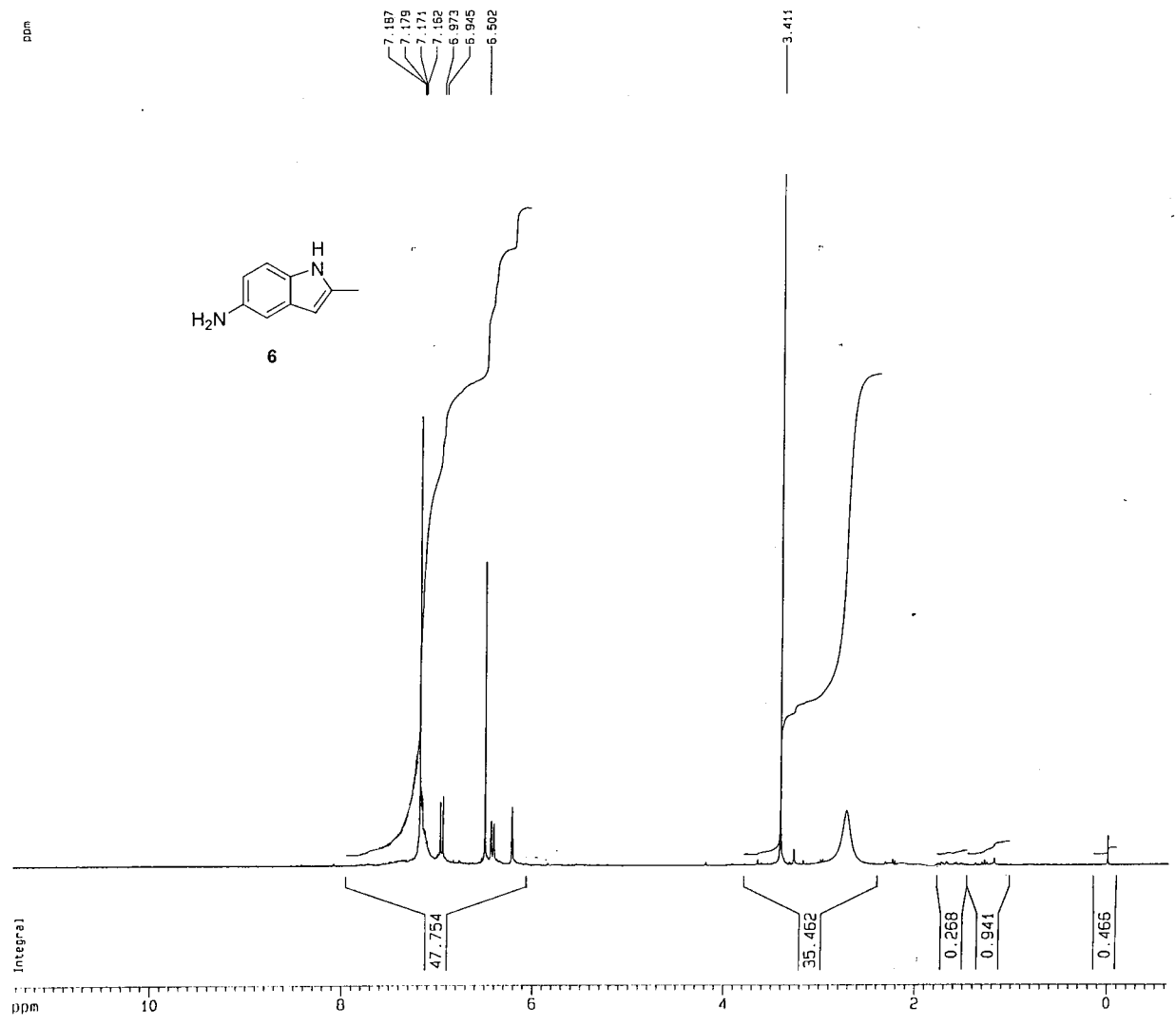
Arbeitskreis Knoche
 User: Jensen
 Bruker ARX 300

Current Data Parameters
 USER: Jens
 NAME: aej1034
 EXPNO: 2
 PROCNO: 1

F2 - Acquisition Parameters
 Date_: 20000907
 Time: 21.52
 INSTRUM: spect
 PROBHD: 5 mm QNP 1H
 PULPROG: zgpg30
 TD: 65536
 SOLVENT: CDCl3
 NS: 1024
 DS: 8
 SWH: 19230.770 Hz
 FIDRES: 0.293438 Hz
 AQ: 1.7039860 sec
 RG: 16384
 SW: 26.000 usec
 DE: 32.50 usec
 TE: 300.0 K
 D12: 0.00002000 sec
 DL6: 23.00 dB
 D1: 1.50000000 sec
 CPDPRG: waltz16
 P31: 110.00 usec
 D11: 0.03000000 sec
 DL5: 20.00 dB
 P1: 6.20 usec
 SF01: 75.4762456 MHz
 NUCLEUS: 13C

F2 - Processing parameters
 SI: 65536
 SF: 75.4677190 MHz
 MDW: EM
 SSB: 0
 LB: 2.00 Hz
 GB: 0
 PC: 1.00

1D NMR plot parameters
 CX: 21.50 cm
 F1P: 240.378 ppm
 F1: 18140.87 Hz
 F2P: -14.442 ppm
 F2: -1089.90 Hz
 PPHCM: 11.85215 ppm/cm
 HZCM: 894.45441 Hz/cm



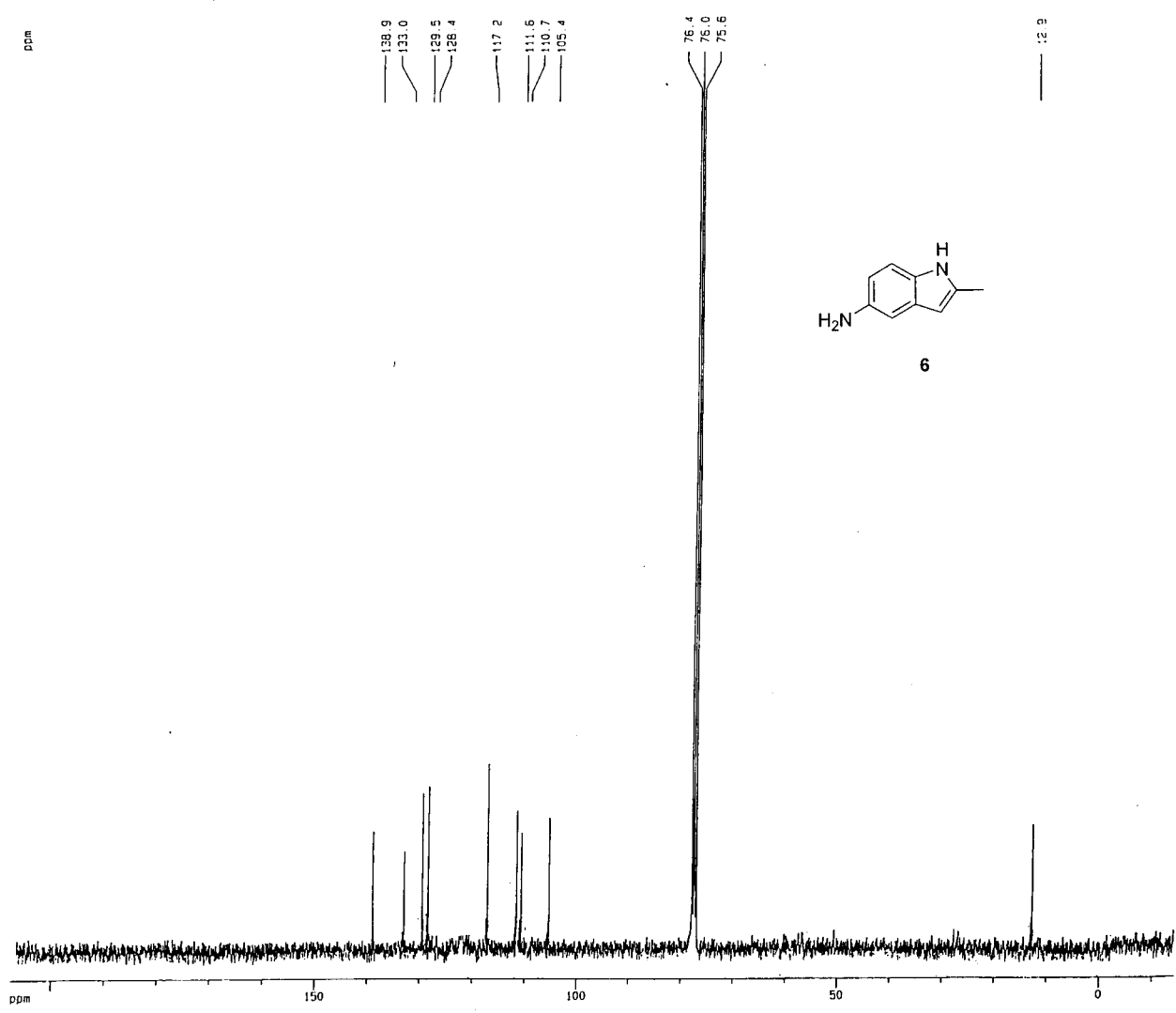
Arbeitskreis Knochel
User Jensen
Bruker ARX 300

Current Data Parameters
USER jens
NAME aeji122
EXPNO 1
PROCNO 1

F2 - Acquisition Parameters
Date_ 20010928
Time 9.39
INSTRUM spect
PROBHD 5 mm QNP 1H
PULPROG zg30
TD 16384
TO 16384
SOLVENT CDCl3
NS 64
DS 2
SWH 3623.188 Hz
FIDRES 0.221142 Hz
AQ 2.2610421 sec
RG 2048
DM 138.000 usec
DE 172.50 usec
TE 290.0 K
D1 2.00000000 sec
P1 11.00 usec
SF01 300.1316507 MHz
NUCLEUS 1H

F2 - Processing parameters
SI 32768
SF 300.1300281 MHz
WDW EM
SSB 0
LB 0.10 Hz
GB 0
PC 4.00

1D NMR plot parameters
CX 21.50 cm
F1P 11.442 ppm
F1 3434.21 Hz
F2P -0.630 ppm
F2 -188.98 Hz
PPMCH 0.56149 ppm/cm
HZCM 188.52040 Hz/cm



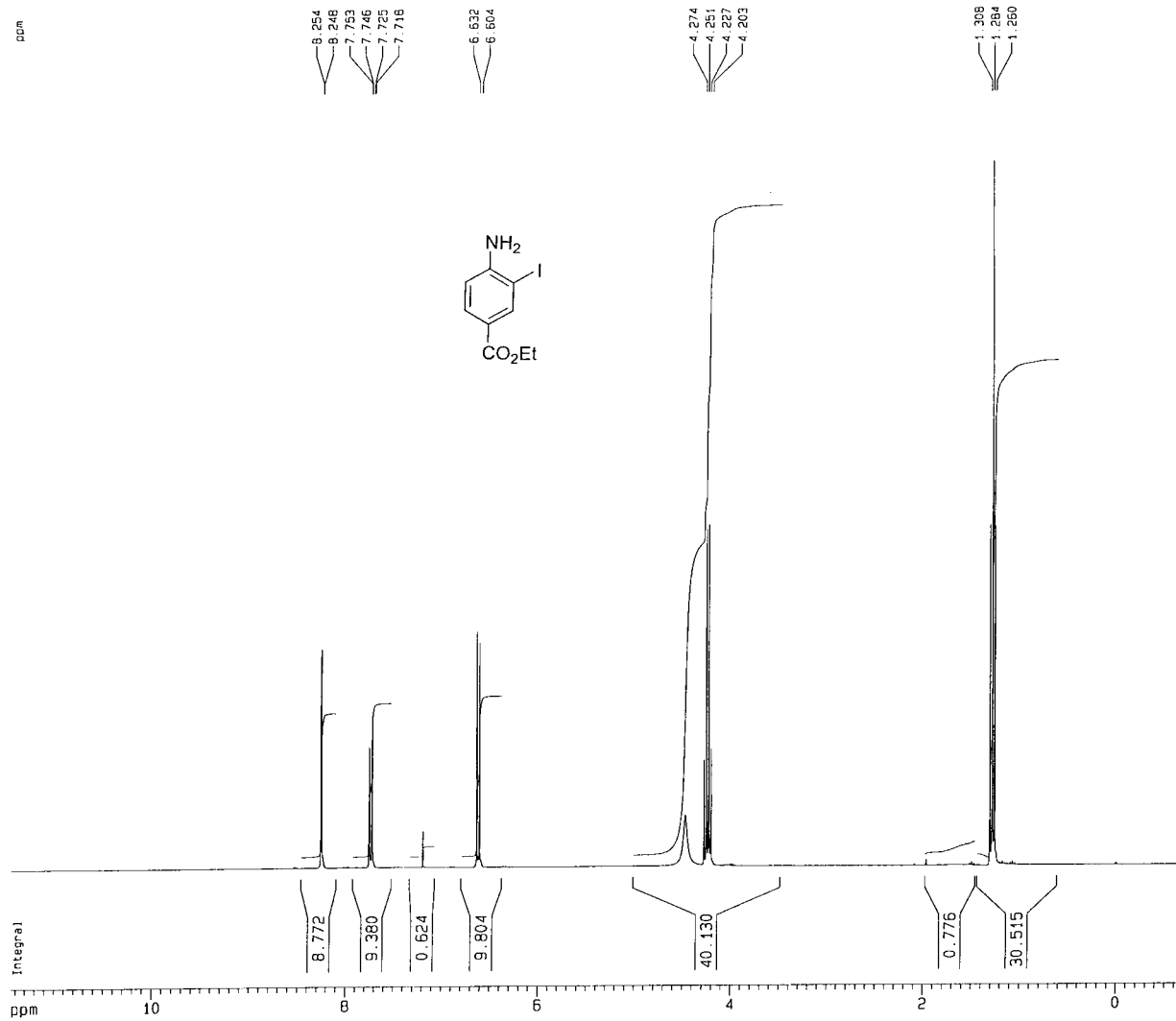
Arbeitskreis Knoche1
 User Jensen
 Bruker ARX 300

Current Data Parameters
 USER jens
 NAME aeji122
 EXPNO 3
 PROCNO 1

F2 - Acquisition Parameters
 Date_ 20011022
 Time 17.23
 INSTRUM spect
 PROBHD 5 mm QNP 1H
 PULPROG zgpg30
 TD 65536
 SOLVENT CDCl3
 NS 2048
 DS 8
 SMH 19230.770 Hz
 FIDRES 0.293438 Hz
 AQ 1.7039860 sec
 RG 16384
 DW 26.000 usec
 DE 32.50 usec
 TE 300.0 K
 D12 0.00002000 sec
 DL6 23.00 dB
 D1 1.50000000 sec
 CPDPRG waltz16
 P31 110.00 usec
 D11 0.03000000 sec
 DL5 20.00 dB
 P1 6.20 usec
 SFO1 75.4762456 MHz
 NUCLEUS 13C

F2 - Processing parameters
 SI 65536
 SF 75.4677180 MHz
 MDW EM
 SSB 0
 LB 2.00 Hz
 GB 0
 PC 1.00

1D NMR plot parameters
 CX 21.50 cm
 F1P 207.666 ppm
 F1 15672.10 Hz
 F2P -13.179 ppm
 F2 -994.56 Hz
 PPMCH 10.27186 ppm/cm
 HZCM 775.19379 Hz/cm



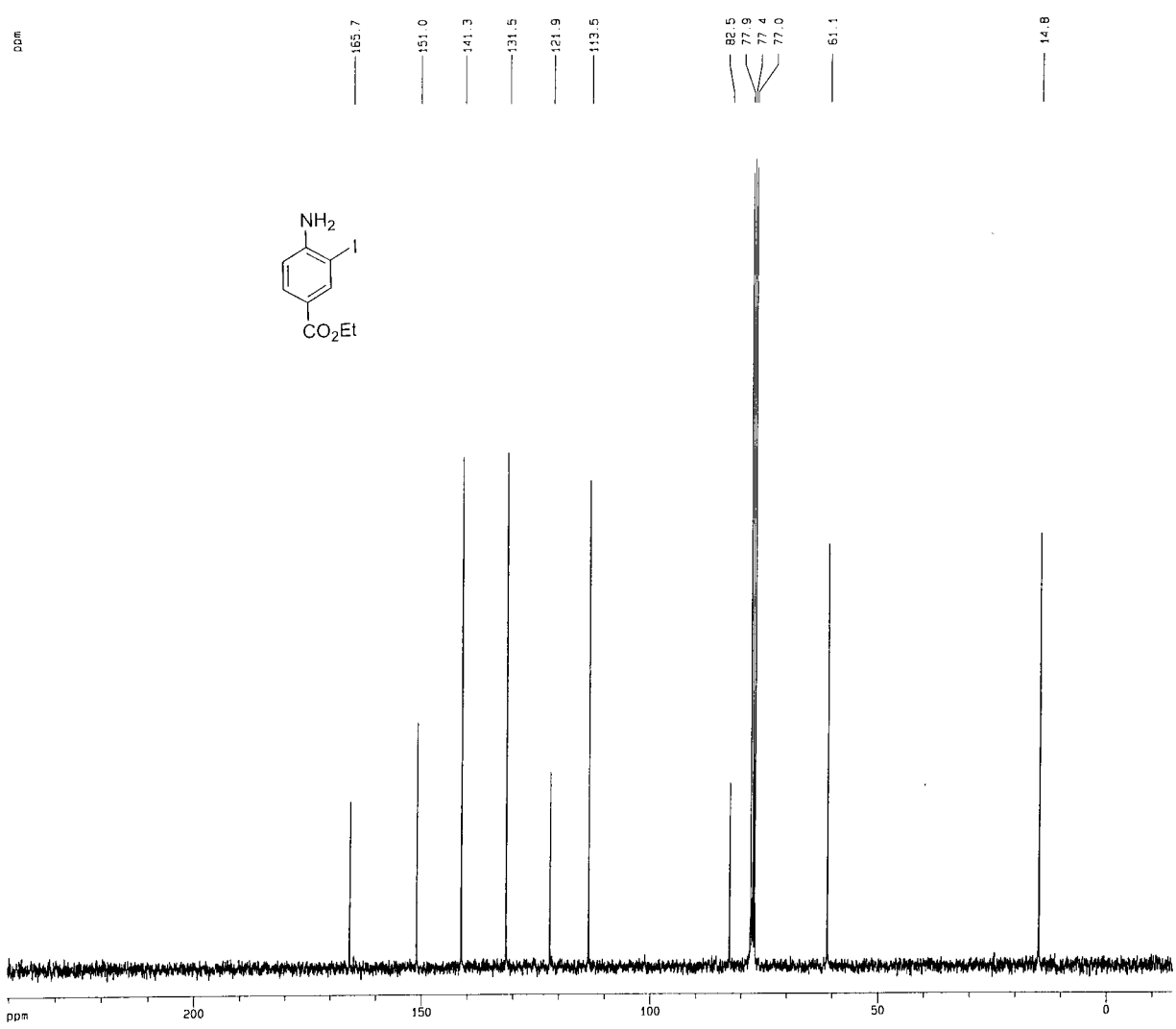
Arbeitskreis Knochel
User Jensen
Bruker ARX 300

Current Data Parameters
USER jens
NAME aej1296s
EXPNO 1
PROCNO 1

F2 - Acquisition Parameters
Date_ 20010612
Time 0.19
INSTRUM spect
PROBHD 5 mm QNP 1H
PULPROG zg30
TD 16384
SOLVENT CDCl3
NS 64
DS 2
SWH 3623.188 Hz
FIDRES 0.221142 Hz
AQ 2.2610421 sec
RG 360
DW 138.000 usec
DE 172.50 usec
TE 290.0 K
O1 2.00000000 sec
P1 11.00 usec
SFO1 300.1316507 MHz
NUCLEUS 1H

F2 - Processing parameters
SI 32768
SF 300.1300271 MHz
WDW EM
SSB 0
LB 0.10 Hz
GB 0
PC 4.00

1D NMR plot parameters
CX 21.50 cm
FIP 11.445 ppm
F1 3435.20 Hz
F2P -0.625 ppm
F2 -187.98 Hz
PPMCM 0.56149 ppm/cm
HZCM 168.52040 Hz/cm



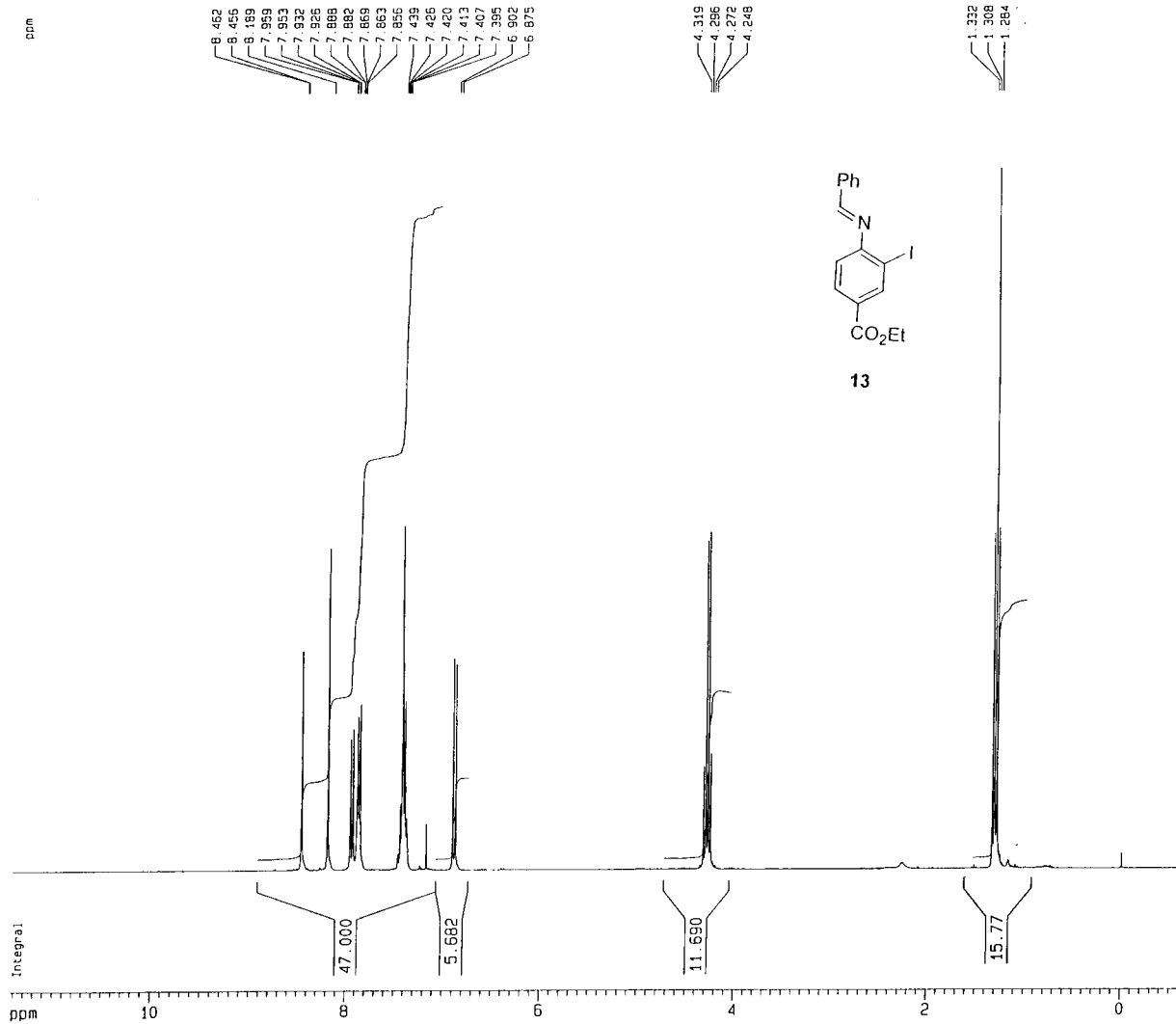
Arbeitskreis Knoche1
 User Jensen
 Bruker ARX 300

Current Data Parameters
 USER jens
 NAME aej1296s
 EXPNO 2
 PROCNO 1

F2 - Acquisition Parameters
 Date_ 20010612
 Time 0.47
 INSTRUM spect
 PROBHD 5 mm QNP 1H
 PULPROG zgpg30
 TD 65536
 SOLVENT CDCl3
 NS 512
 DS 2
 SWH 19230.770 Hz
 FIDRES 0.293438 Hz
 AQ 1.7039860 sec
 RG 16384
 DW 26.000 usec
 DE 32.50 usec
 TE 300.0 K
 O12 0.00002000 sec
 DL6 23.00 dB
 O1 1.50000000 sec
 CPOPRG waltz16
 P31 110.00 usec
 O11 0.03000000 sec
 DL5 20.00 dB
 P1 6.20 usec
 SF01 75.4762456 MHz
 NUCLEUS 13C

F2 - Processing parameters
 S1 65536
 SF 75.4677190 MHz
 WDM EM
 SSB 0
 LB 2.00 Hz
 GB 0
 PC 1.00

1D NMR plot parameters
 CX 21.50 cm
 F1P 240.379 ppm
 F1 18140.87 Hz
 F2P -14.442 ppm
 F2 -1089.90 Hz
 PPMCM 11.85214 ppm/cm
 HZCM 894.45435 Hz/cm



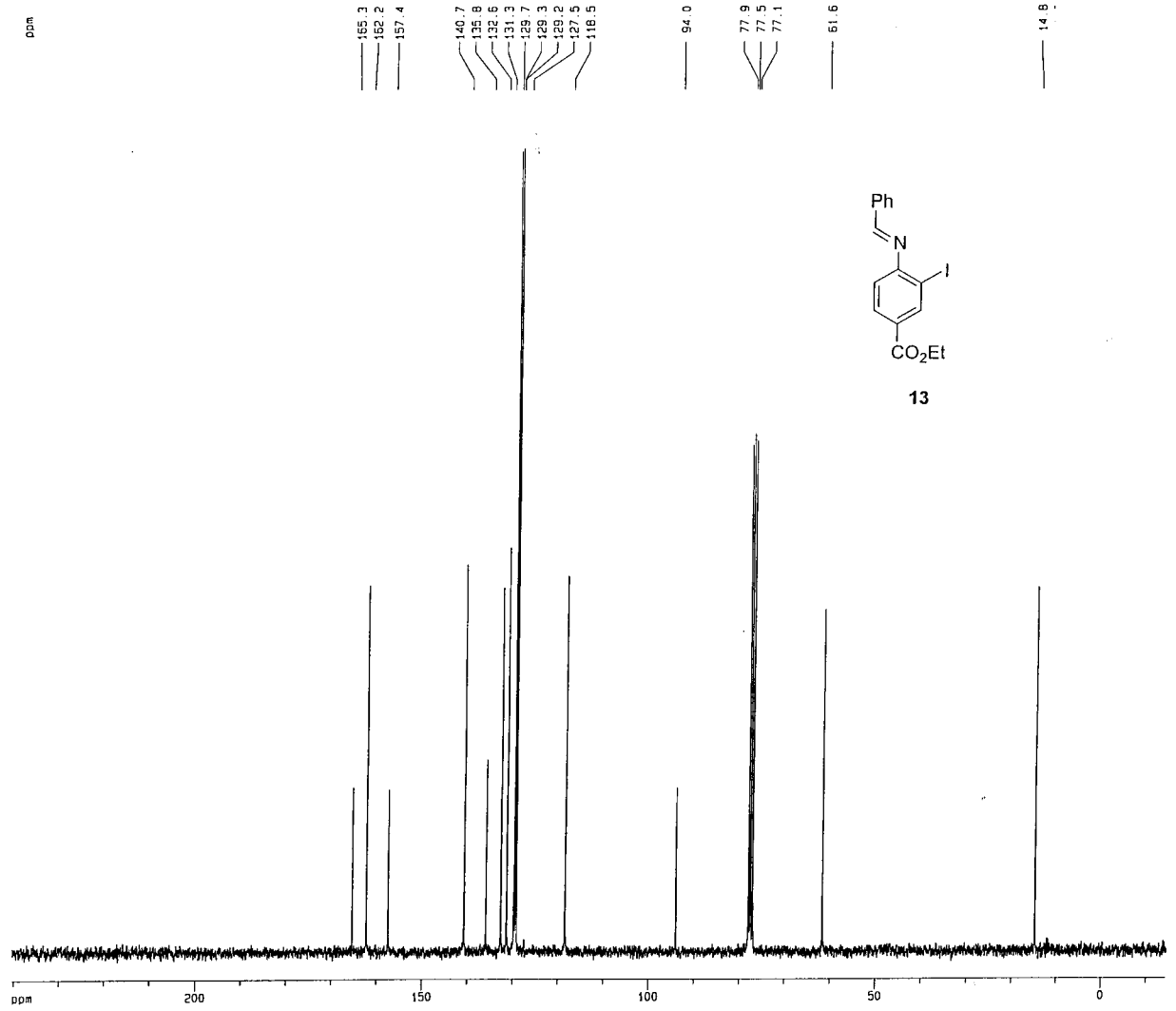
Arbeitskreis Knoche
User Jensen
Bruker ARX 300

Current Data Parameters
USER jens
NAME aej1302
EXPNO 3
PROCNO 1

F2 - Acquisition Parameters
Date_ 20010820
Time 12.10
INSTRUM spect
PROBHD 5 mm QNP 1H
PULPROG zg30
TD 16384
SOLVENT CDCl3
NS 64
DS 2
SWH 3623.188 Hz
FIDRES 0.221142 Hz
AQ 2.2610421 sec
RG 256
DM 138.000 usec
DE 172.50 usec
TE 290.0 K
O1 2.0000000 sec
P1 11.00 usec
SFO1 300.1316507 MHz
NUCLEUS 1H

F2 - Processing parameters
SI 32768
SF 300.1300328 MHz
WDW EH
SSB 0
LB 0.10 Hz
GB 0
PC 4.00

1D NMR plot parameters
CX 21.50 cm
F1P 11.427 ppm
F1 3429.49 Hz
F2P -0.645 ppm
F2 -193.70 Hz
PPMCH 0.56149 ppm/cm
HZCM 168.52039 Hz/cm



Arbeitskreis Knochel
 User Jensen
 Bruker ARX 300

Current Data Parameters
 USER jens
 NAME aej1302
 EXPNO 4
 PROCNO 1

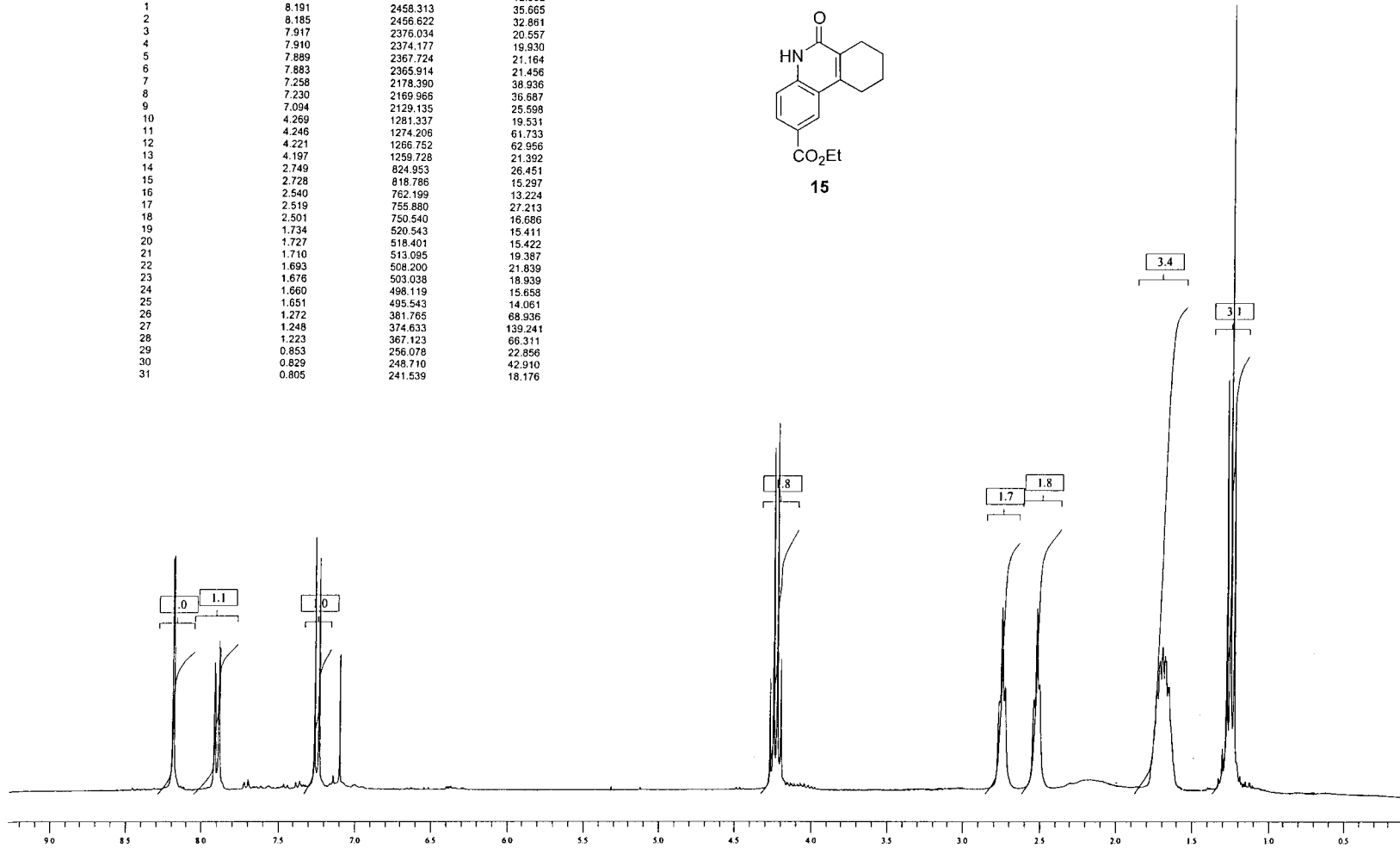
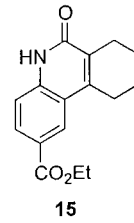
F2 - Acquisition Parameters
 Date_ 20010820
 Time 12.31
 INSTRUM spect
 PROBHD 5 mm QNP 1H
 PULPROG zgpg30
 TD 65536
 SOLVENT CDCl3
 NS 384
 DS 2
 SWH 19230.770 Hz
 FIDRES 0.293438 Hz
 AQ 1.7039860 sec
 RG 8192
 DM 26.000 usec
 DE 32.50 usec
 TE 300.0 K
 D12 0.00002000 sec
 DL6 23.00 dB
 D1 1.50000000 sec
 CPDPRG waltz16
 P31 110.00 usec
 D11 0.03000000 sec
 DL5 20.00 dB
 P1 6.20 usec
 SF01 75.4762456 MHz
 NUCLEUS 13C

F2 - Processing parameters
 SI 65536
 SF 75.4677190 MHz
 WDW EM
 SSB 0
 LB 2.00 Hz
 GB 0
 PC 1.00

1D NMR plot parameters
 CX 21.50 cm
 F1P 240.394 ppm
 F1 18141.96 Hz
 F2P -14.428 ppm
 F2 -1088.81 Hz
 PPMCM 11.85214 ppm/cm
 HZCM 894.45435 Hz/cm

Peak List

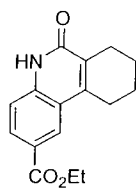
Index	ppm	Hertz	Height
FROM	8.561	2569.420	Threshold
TO	0.511	153.223	12.002
1	8.191	2458.313	35.665
2	8.185	2456.622	32.861
3	7.917	2376.034	20.557
4	7.910	2374.177	19.930
5	7.889	2367.724	21.164
6	7.883	2365.914	21.456
7	7.258	2178.390	38.936
8	7.230	2169.966	36.687
9	7.094	2129.135	25.598
10	4.269	1281.337	19.531
11	4.246	1274.206	61.733
12	4.221	1266.752	62.956
13	4.197	1259.728	21.392
14	2.749	824.953	26.451
15	2.728	818.786	15.297
16	2.540	762.199	13.224
17	2.519	755.880	27.213
18	2.501	750.540	16.686
19	1.734	520.543	15.411
20	1.727	518.401	15.422
21	1.710	513.085	19.387
22	1.693	508.200	21.839
23	1.676	503.038	18.839
24	1.660	498.119	15.658
25	1.651	495.543	14.061
26	1.272	381.765	68.936
27	1.248	374.633	139.241
28	1.223	367.123	66.311
29	0.853	256.078	22.856
30	0.829	248.710	42.910
31	0.805	241.539	18.176



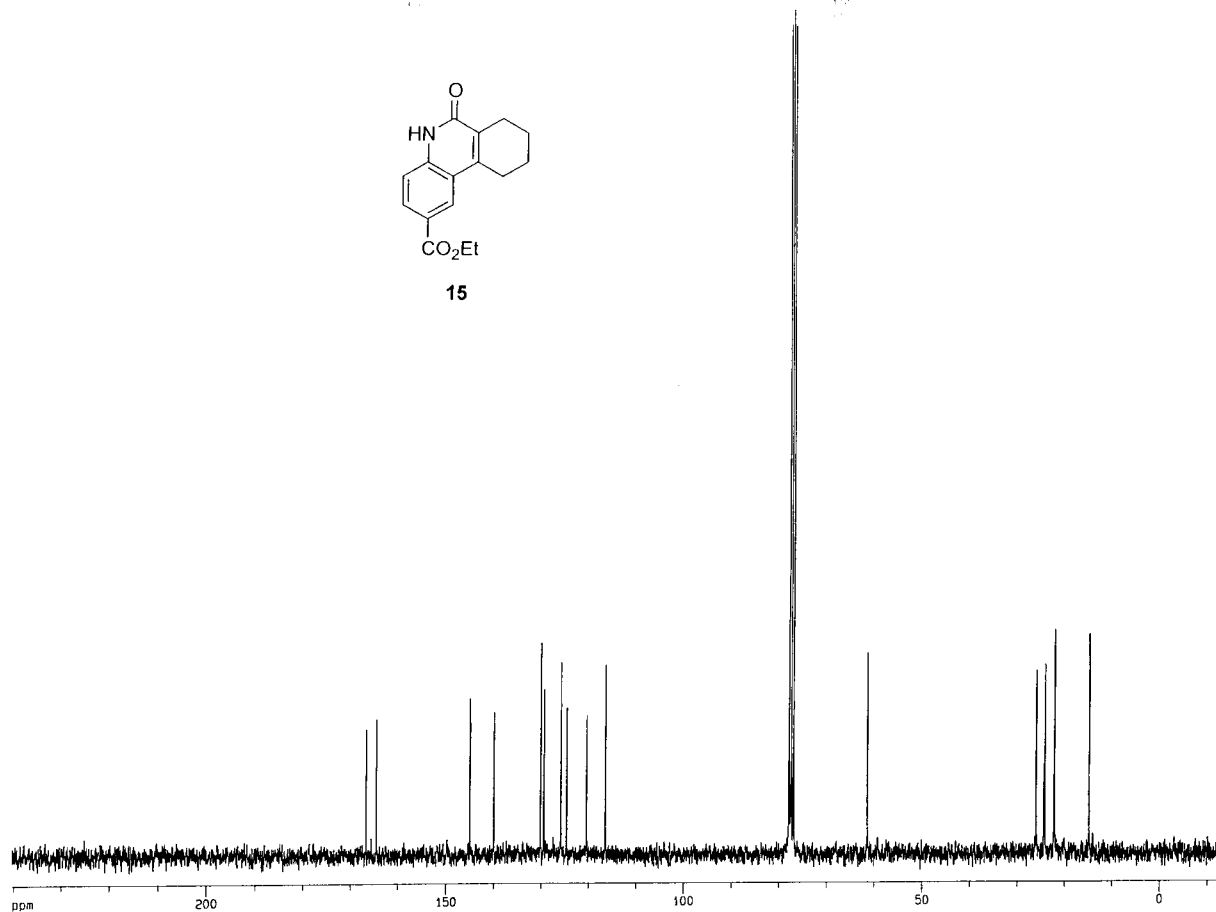
ppm

166.7
164.5
145.0
139.9
130.1
129.4
125.9
124.7
120.4
116.5
77.8
77.4
77.0
61.4
59.2
26.0
24.4
24.2
22.2
22.1
20.1
14.8
14.0

Arbeitskreis Knochen
User Jensen
Bruker ARX 300



15



Current Data Parameters
USER jens
NAME ae1385
EXPNO 2
PROCNO 1

F2 - Acquisition Parameters
Date_ 20010602
Time 20.03
INSTRUM spect
PROBHD 5 mm QNP 1H
PULPROG zgpg30
TD 65536
SOLVENT CDCl3
NS 512
DS 2
SWH 19230.770 Hz
FIDRES 0.293438 Hz
AQ 1.7039860 sec
RG 16384
DM 26.000 usec
DE 32.50 usec
TE 300.0 K
D12 0.00002000 sec
DL6 23.00 dB
D1 1.50000000 sec
CPDPRG waltz16
P31 110.00 usec
D11 0.03000000 sec
DL5 20.00 dB
P1 6.20 usec
SF01 75.4762456 MHz
NUCLEUS 13C

F2 - Processing parameters
SI 65536
SF 75.4677190 MHz
WDW EM
SSB 0
LB 2.00 Hz
GB 0
PC 1.00

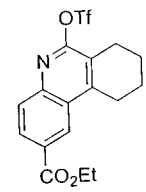
1D NMR plot parameters
CX 21.50 cm
F1P 240.379 ppm
F1 18140.87 Hz
F2P -14.442 ppm
F2 -1089.90 Hz
PPMCM 11.85214 ppm/cm
HZCM 894.45435 Hz/cm

ppm

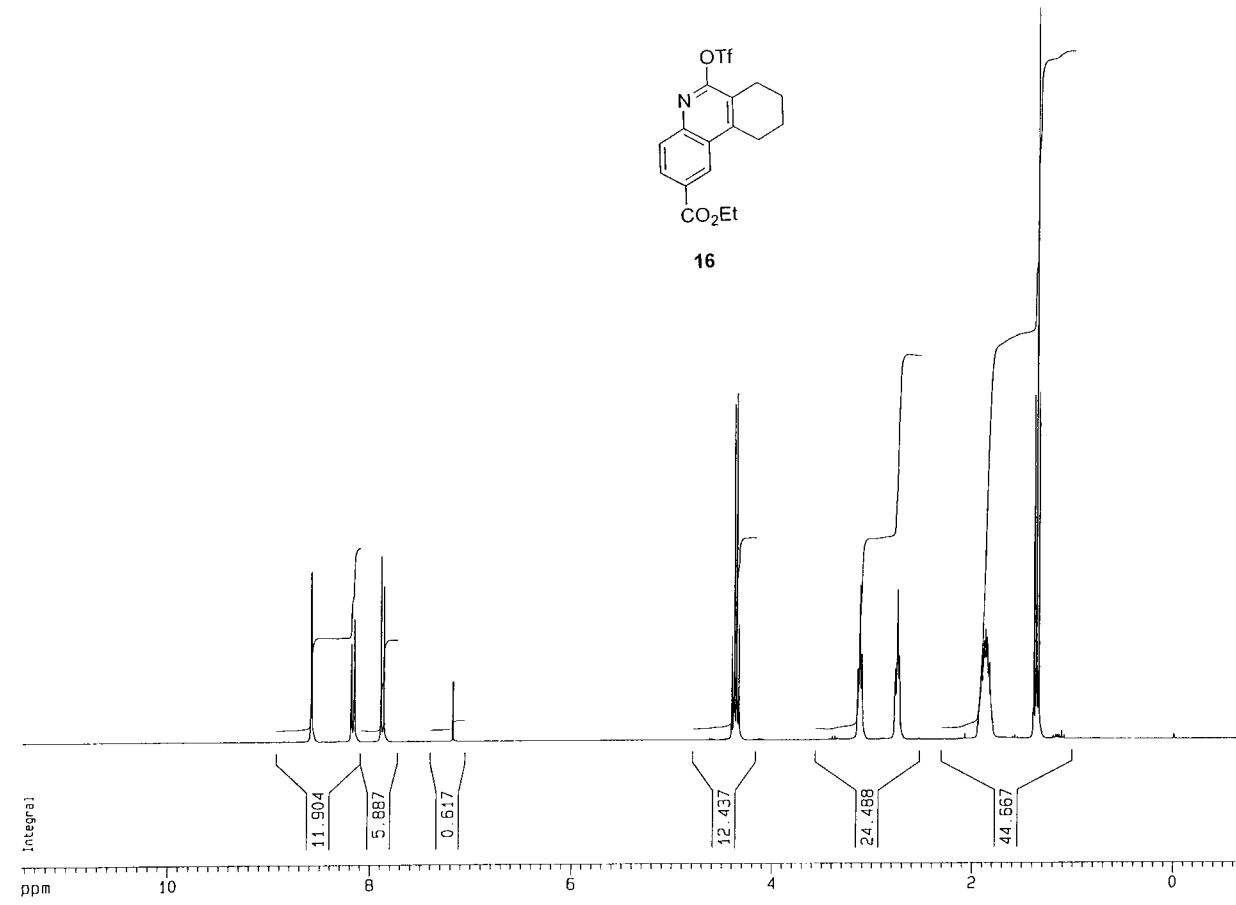
8.591
8.586
8.192
8.166
8.163
8.157
7.895
7.865

4.405
4.381
4.357
4.334

3.147
3.127
3.107
2.772
2.752
2.733
1.917
1.907
1.897
1.891
1.875
1.859
1.853
1.842
1.833
1.391
1.368
1.344



16



Arbeitskreis Knochel
User Jensen
Bruker ARX 300

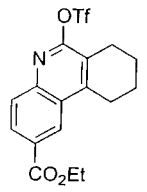
Current Data Parameters
USER jens
NAME aej1392
EXPNO 1
PROCNO 1

F2 - Acquisition Parameters
Date_ 20010802
Time 21.32
INSTRUM spect
PROBHD 5 mm QNP 1H
PULPROG zg30
TD 16384
SOLVENT CDCl3
NS 64
DS 2
SWH 3623.188 Hz
FIDRES 0.221142 Hz
AQ 2.2610421 sec
RG 256
DW 138.000 usec
DE 172.50 usec
TE 290.0 K
D1 2.00000000 sec
P1 11.00 usec
SFO1 300.1316507 MHz
NUCLEUS 1H

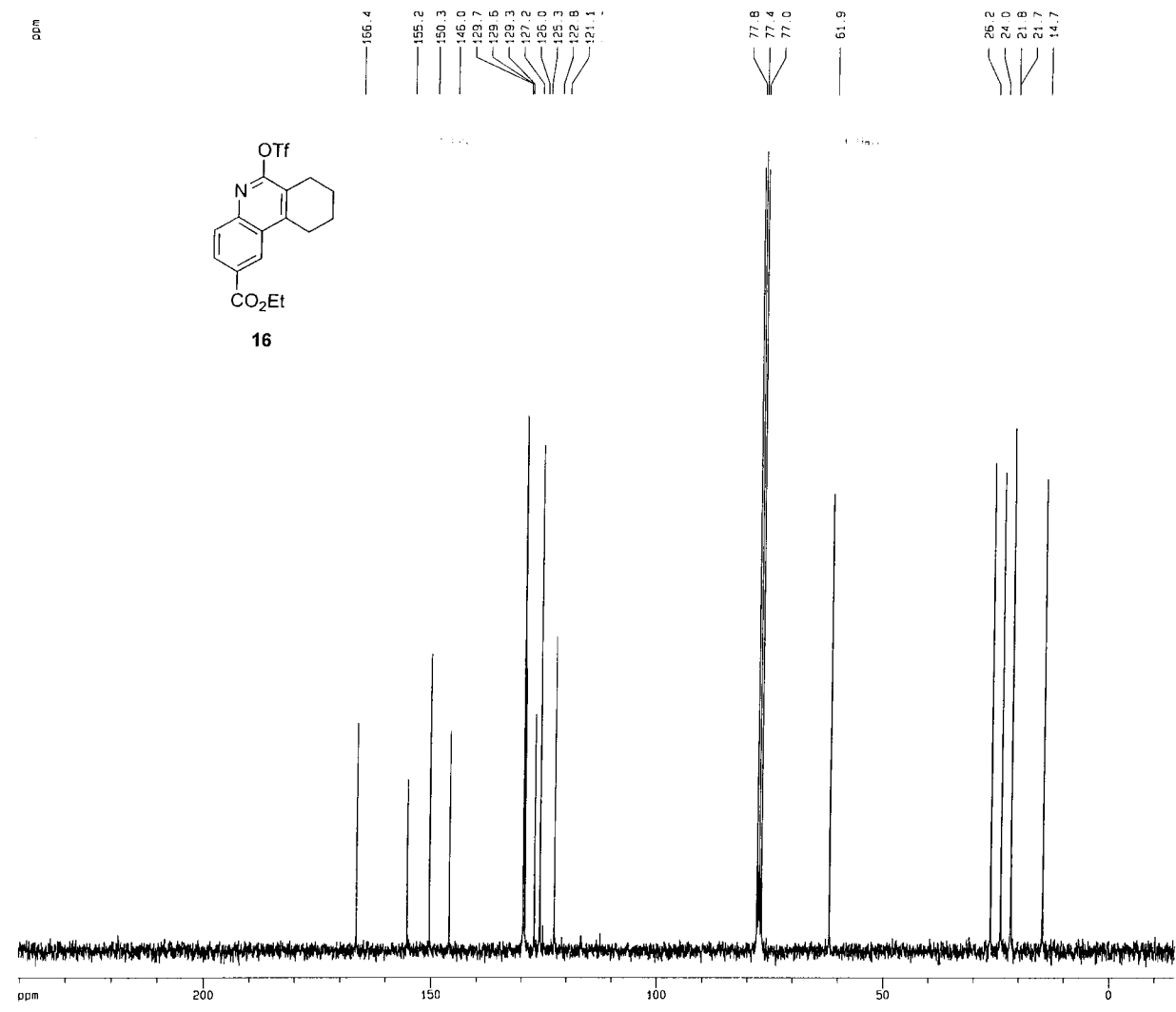
F2 - Processing parameters
SI 32768
SF 300.1300312 MHz
WDW EM
SSB 0
LB 0.10 Hz
GB 0
PC 4.00

1D NMR plot parameters
CX 21.50 cm
F1P 11.432 ppm
F1 3431.05 Hz
F2P -0.640 ppm
F2 -192.13 Hz
PPMCM 0.56149 ppm/cm
HZCM 168.52039 Hz/cm

ppm



16



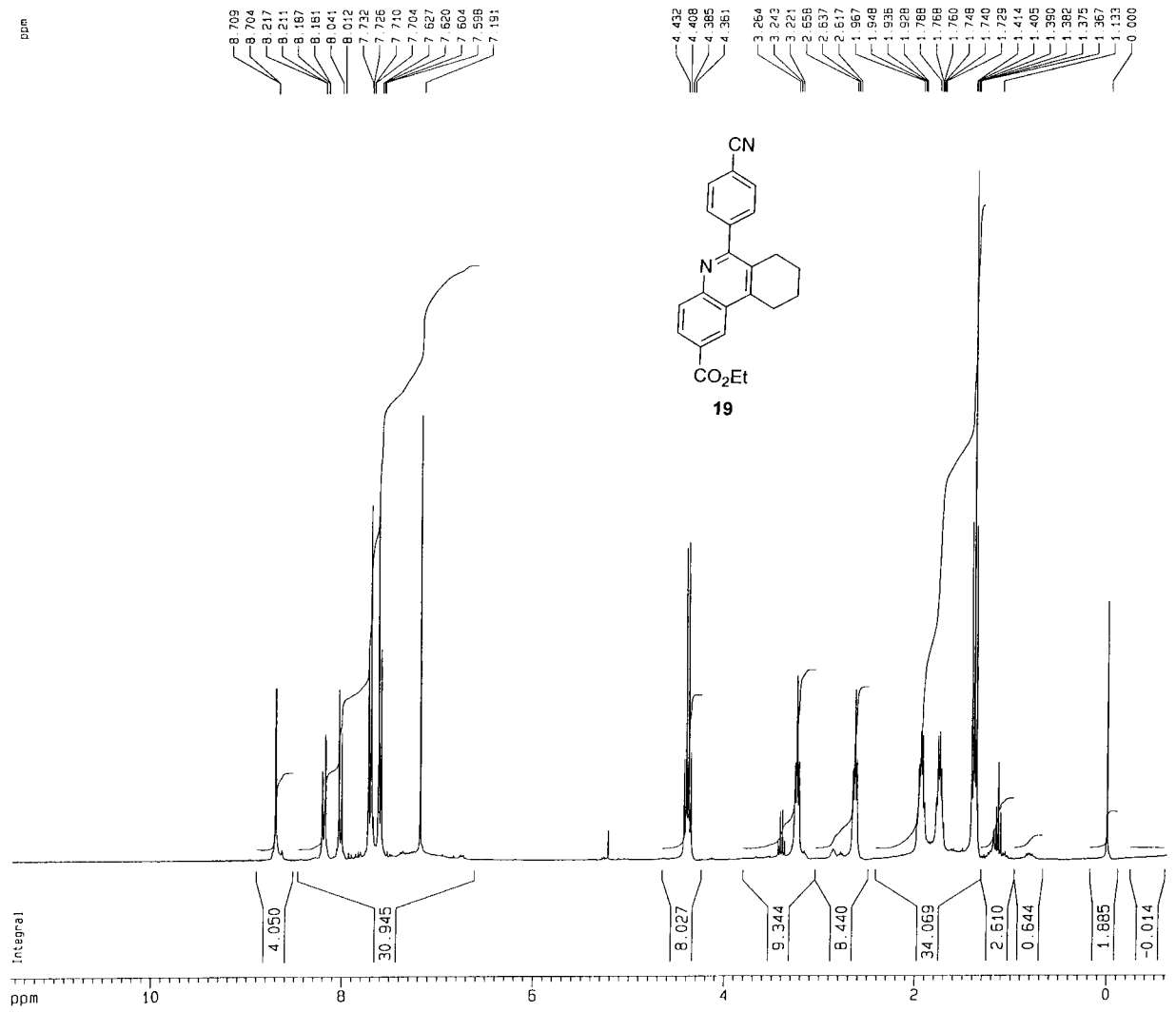
Arbeitskreis Knochei
 User Jensen
 Bruker ARX 300

Current Data Parameters
 USER jens
 NAME aej1392
 EXPNO 2
 PROCNO 1

F2 - Acquisition Parameters
 Date_ 20010802
 Time 22.00
 INSTRUM spect
 PROBHD 5 mm QNP 1H
 PULPROG zgpg30
 TD 65536
 SOLVENT CDCl3
 NS 512
 DS 2
 SWH 19230.770 Hz
 FIDRES 0.293438 Hz
 AQ 1.7039860 sec
 RG 16384
 DM 26.000 usec
 DE 32.50 usec
 TE 300.0 K
 D12 0.00002000 sec
 DL6 23.00 dB
 D1 1.50000000 sec
 CPDPRG wait116
 P31 110.00 usec
 D11 0.03000000 sec
 DL5 20.00 dB
 P1 6.20 usec
 SF01 75.4762456 MHz
 NUCLEUS 13C

F2 - Processing parameters
 S1 65536
 SF 75.4677190 MHz
 WDW EM
 SSB 0
 LB 2.00 Hz
 GB 0
 PC 1.00

1D NMR plot parameters
 CX 21.50 cm
 F1P 240.379 ppm
 F1 18140.87 Hz
 F2P -14.442 ppm
 F2 -1089.90 Hz
 PPMCM 11.85214 ppm/cm
 HZCM 894.45435 Hz/cm



Arbeitskreis Knochen
User Jensen
Bruker ARX 300

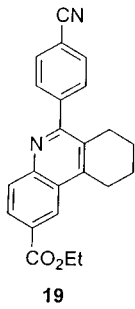
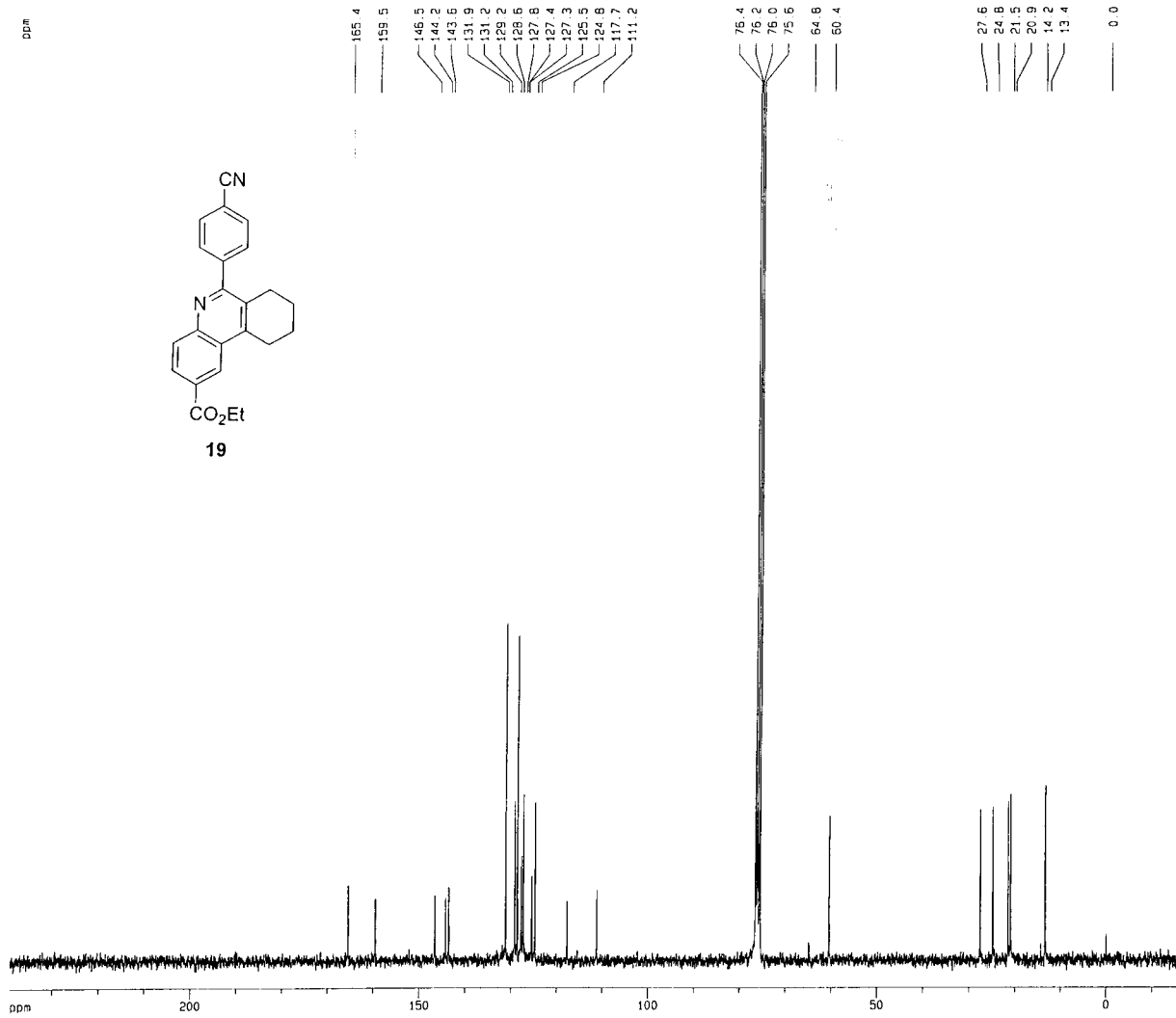
Current Data Parameters
 USER jens
 NAME ae1416
 EXPNO 4
 PROCNO 1

F2 - Acquisition Parameters
 Date_ 2010820
 Time 17.53
 INSTRUM spect
 PROBHD 5 mm QNP 1H
 PULPROG zg30
 TD 16384
 SOLVENT CDCl3
 NS 64
 DS 2
 SWH 3623.188 Hz
 FIDRES 0.221142 Hz
 AQ 2.2610421 sec
 RG 1024
 DW 138.000 usec
 DE 172.50 usec
 TE 290.0 K
 O1 2.0000000 sec
 P1 11.00 usec
 SF01 300.1316507 MHz
 NUCLEUS 1H

F2 - Processing parameters
 SI 32768
 SF 300.1300270 MHz
 HDW EM
 SSB 0
 LB 0.10 Hz
 GB 0
 PC 4.00

1D NMR plot parameters
 CX 21.50 cm
 F1P 11.446 ppm
 F1 3435.28 Hz
 F2P -0.626 ppm
 F2 -187.91 Hz
 PPMCN 0.56149 ppm/cm
 HZCM 168.52040 Hz/cm

ppm



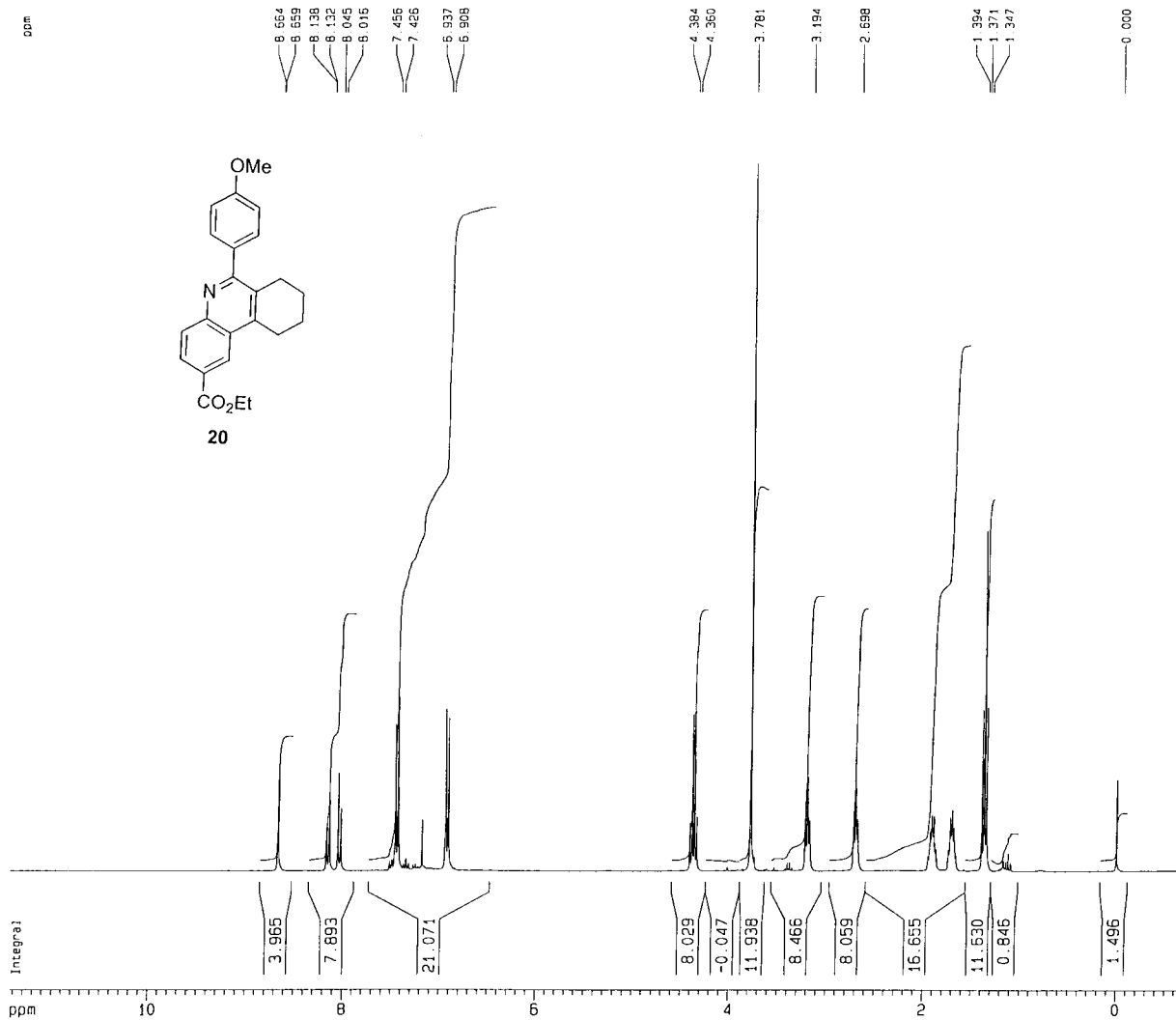
Arbeitskreis Knochel
 User Jensen
 Bruker ARX 300

Current Data Parameters
 USER jens
 NAME aej1416
 EXPNO 5
 PROCNO 1

F2 - Acquisition Parameters
 Date_ 20010820
 Time 19.37
 INSTRUM spect
 PROBHD 5 mm QNP 1H
 PULPROG zgpg30
 TO 65536
 SOLVENT CDCl3
 NS 4096
 DS 2
 SWH 19230.770 Hz
 FIDRES 0.293438 Hz
 AQ 1.7039860 sec
 RG 16384
 OW 26.000 usec
 DE 32.50 usec
 TE 300.0 K
 D12 0.00002000 sec
 DL6 23.00 dB
 D1 1.50000000 sec
 CPDPRG waltz16
 P31 110.00 usec
 D11 0.03000000 sec
 DL5 20.00 dB
 P1 6.20 usec
 SFO1 75.4762456 MHz
 NUCLEUS 13C

F2 - Processing parameters
 SI 65536
 SF 75.4678241 MHz
 WDW EM
 SSB 0
 LB 2.00 Hz
 GB 0
 PC 1.00

1D NMR plot parameters
 CX 21.50 cm
 F1P 238.986 ppm
 F1 18035.72 Hz
 F2P -15.835 ppm
 F2 -1195.05 Hz
 PPMCM 11.85213 ppm/cm
 HZCM 894.45441 Hz/cm



Arbeitskreis Knoche
User Jensen
Bruker ARX 300

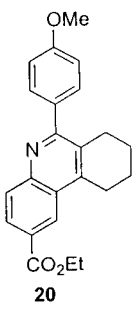
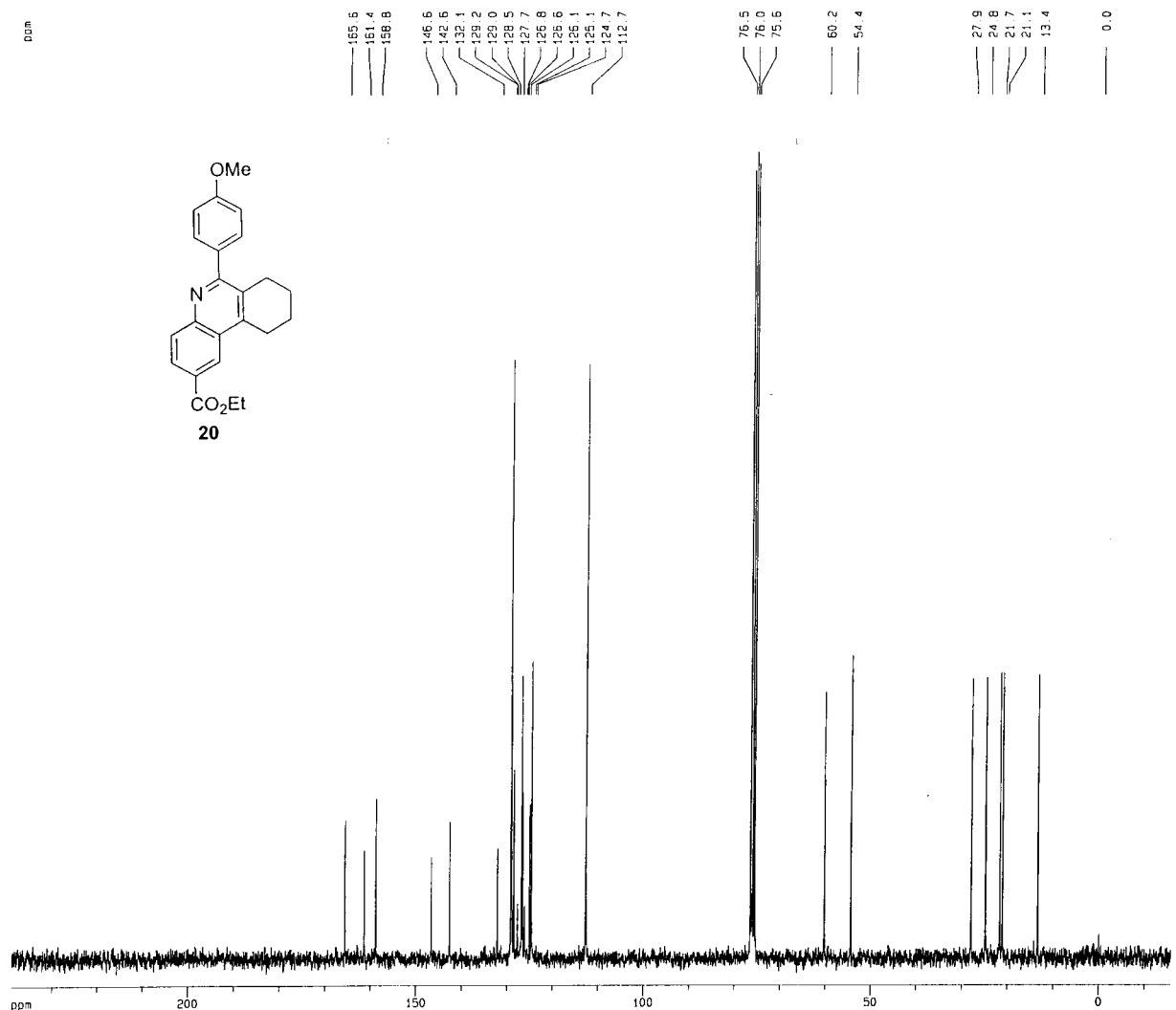
Current Data Parameters
USER jens
NAME ae;1424
EXPNO 1
PROCNO 1

F2 - Acquisition Parameters
Date_ 20010731
Time 11.06
INSTRUM spect
PROBHD 5 mm QNP 1H
PULPROG zg30
TD 16384
SOLVENT CDCl3
NS 64
DS 2
SWH 3623.188 Hz
FIDRES 0.221142 Hz
AQ 2.2610421 sec
RG 360
DW 138.000 usec
DE 172.50 usec
TE 290.0 K
D1 2.00000000 sec
P1 11.00 usec
SF01 300.1316507 MHz
NUCLEUS 1H

F2 - Processing parameters
SI 32768
SF 300.1300307 MHz
WDW EM
SSB 0
LB 0.10 Hz
GB 0
PC 4.00

1D NMR plot parameters
CX 21.50 cm
F1P 11.434 ppm
F1 3431.58 Hz
F2P -0.638 ppm
F2 -191.61 Hz
PPMCM 0.56149 ppm/cm
HZCM 168.52039 Hz/cm

0cm



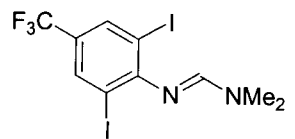
Arbeitskreis Knoche
 User Jensen
 Bruker ARX 300

Current Data Parameters
 USER jens
 NAME aej1424
 EXPNO 2
 PROCNO 1

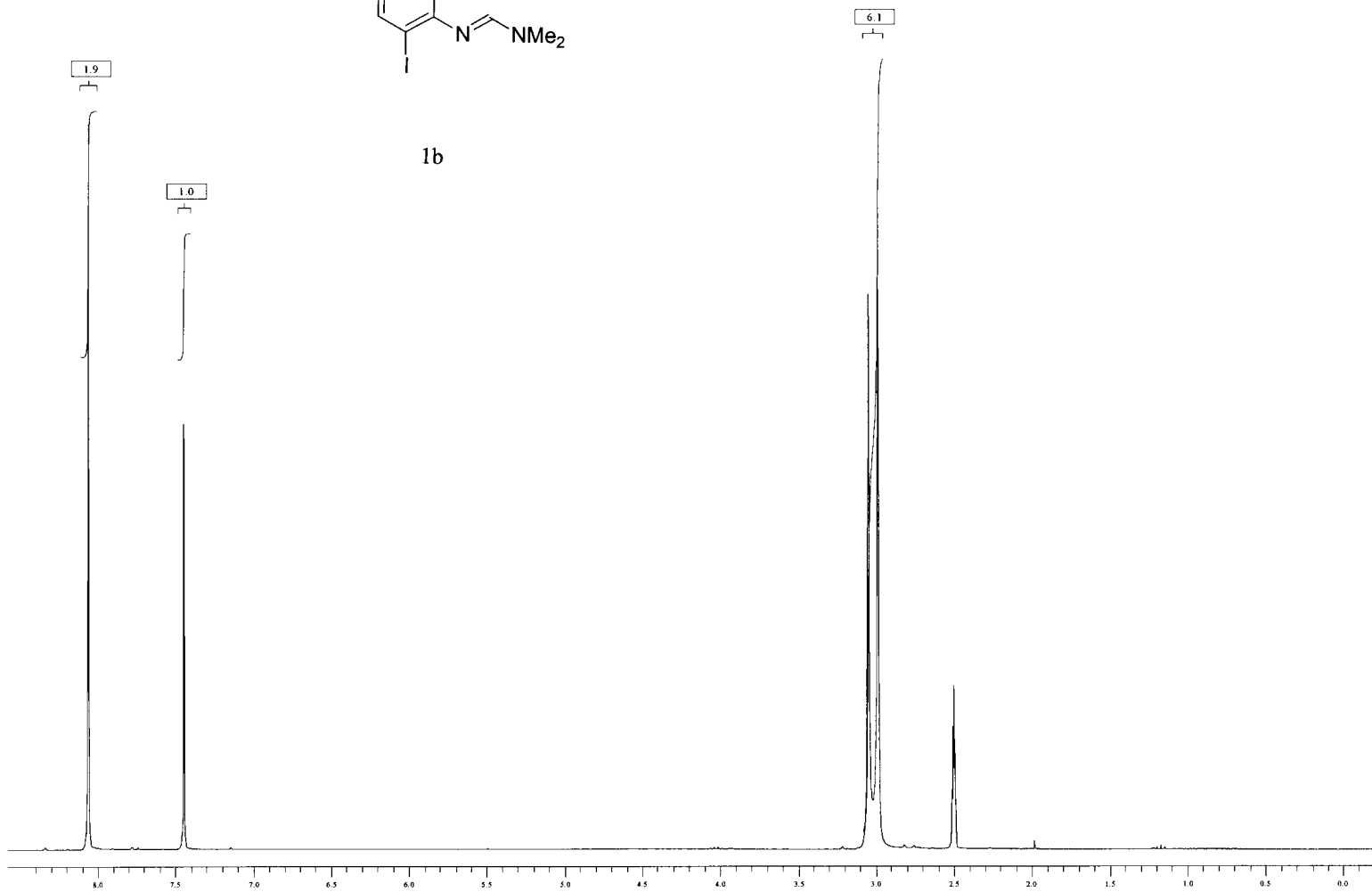
F2 - Acquisition Parameters
 Date_ 20010731
 Time 11.34
 INSTRUM spect
 PROBHD 5 mm QNP 1H
 PULPROG zgpg30
 TD 65536
 SOLVENT CDCl3
 NS 512
 DS 2
 SWH 19230.770 Hz
 FIDRES 0.293438 Hz
 AQ 1.7039860 sec
 RG 8192
 DW 26.000 usec
 DE 32.50 usec
 TE 300.0 K
 O12 0.00002000 sec
 OL6 23.00 dB
 O1 1.50000000 sec
 CPDPRG waltz16
 P31 110.00 usec
 D11 0.03000000 sec
 OL5 20.00 dB
 P1 6.20 usec
 SF01 75.4762456 MHz
 NUCLEUS 13C

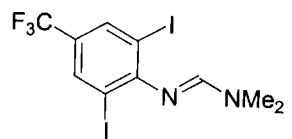
F2 - Processing parameters
 S1 65536
 SF 75.4678253 MHz
 WDW EM
 SSB 0
 LB 2.00 Hz
 GB 0
 PC 1.00

1D NMR plot parameters
 CX 21.50 cm
 F1P 238.970 ppm
 F1 18034.53 Hz
 F2P -15.851 ppm
 F2 -1196.24 Hz
 PPMCM 11.85213 ppm/cm
 HZCM 894.45441 Hz/cm

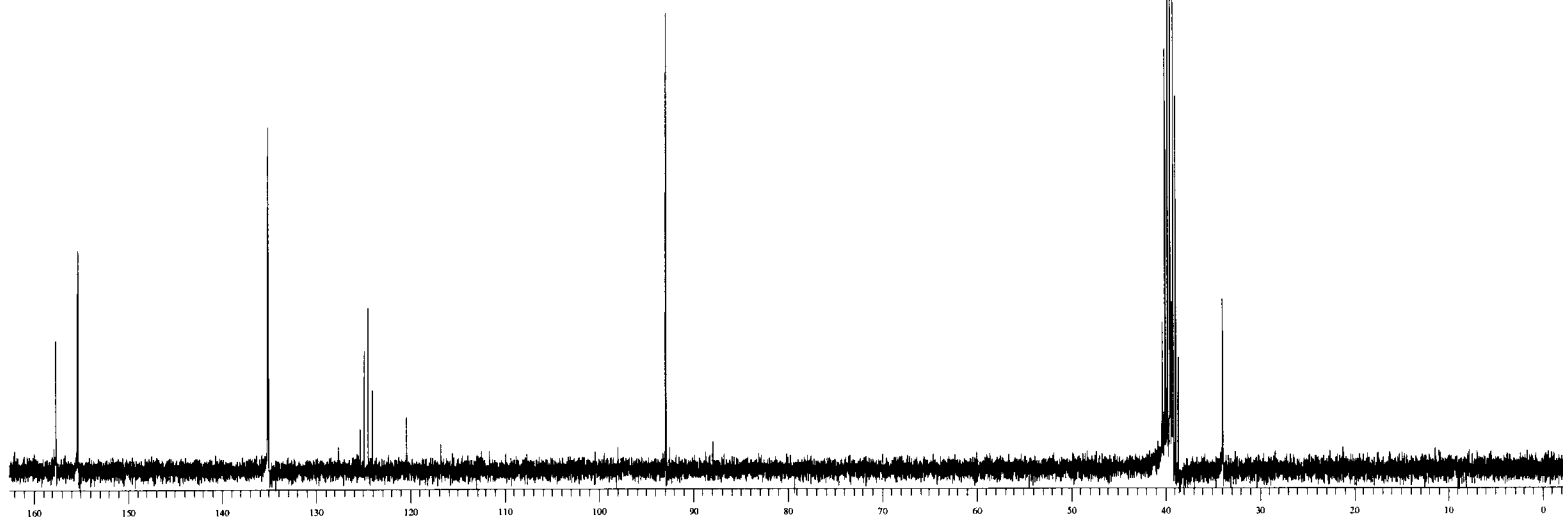


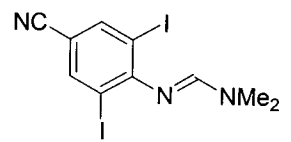
1b



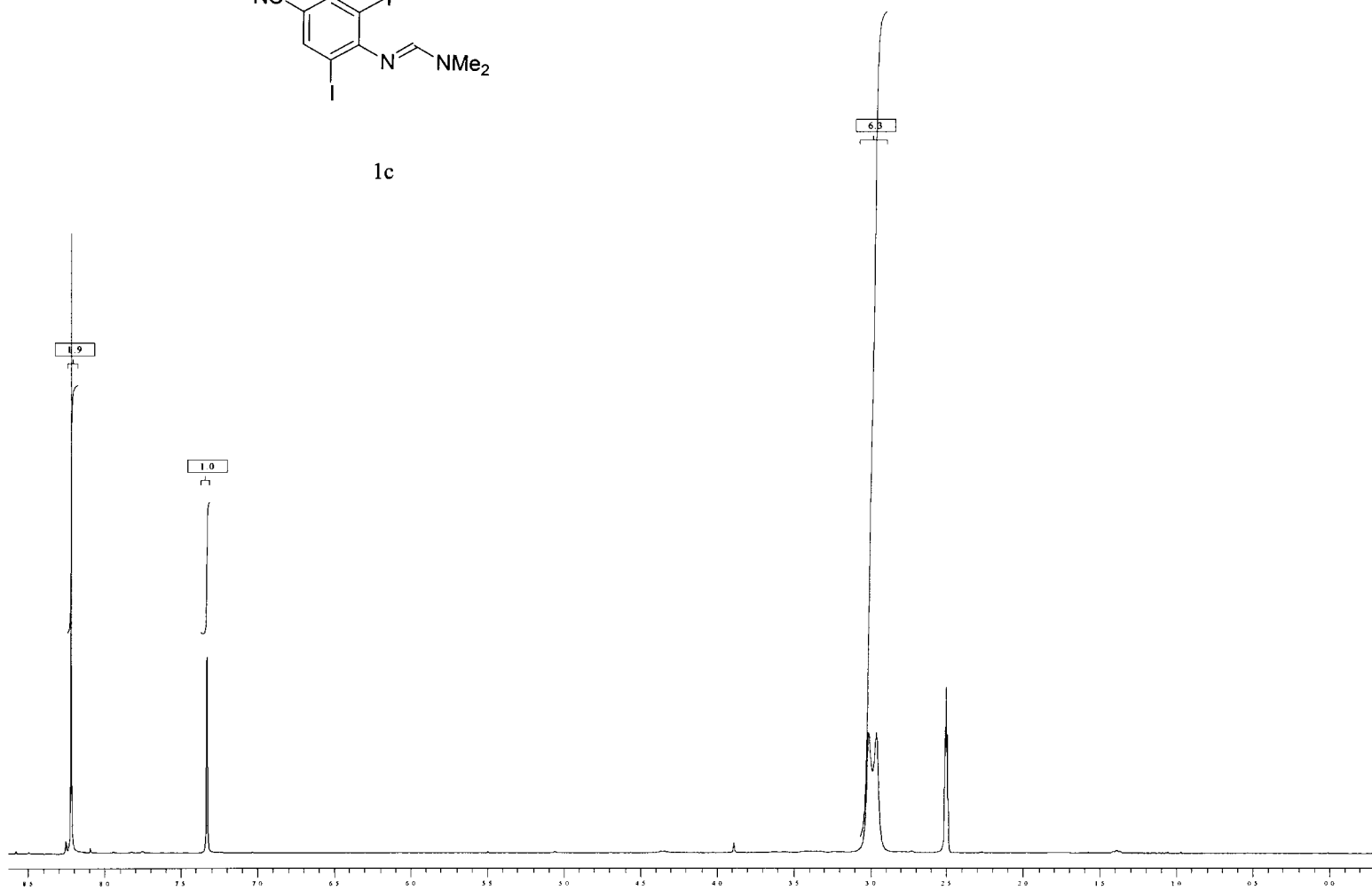


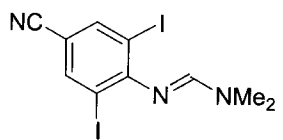
1b



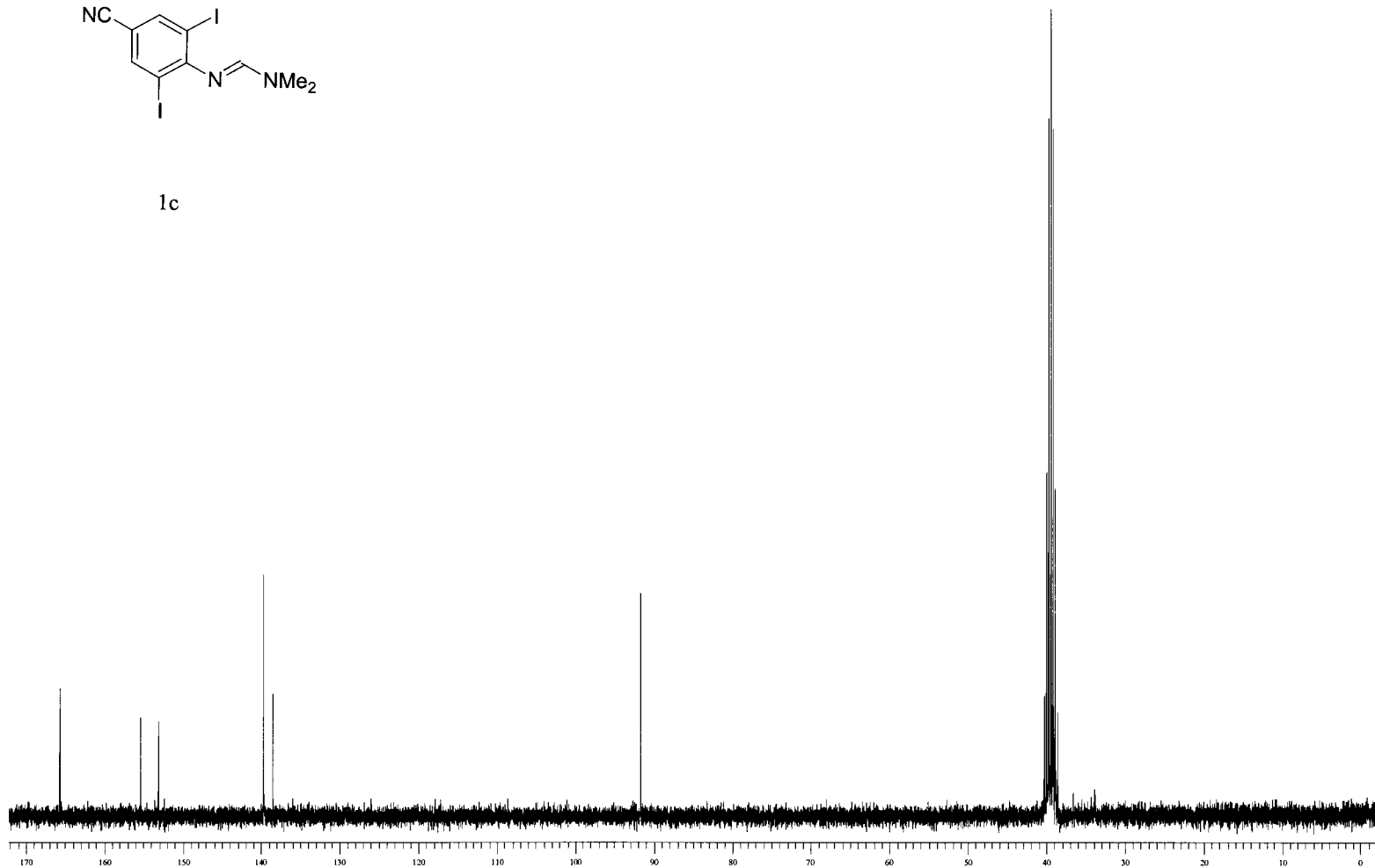


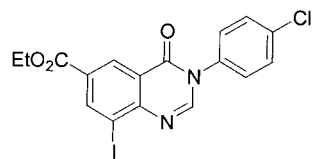
1c



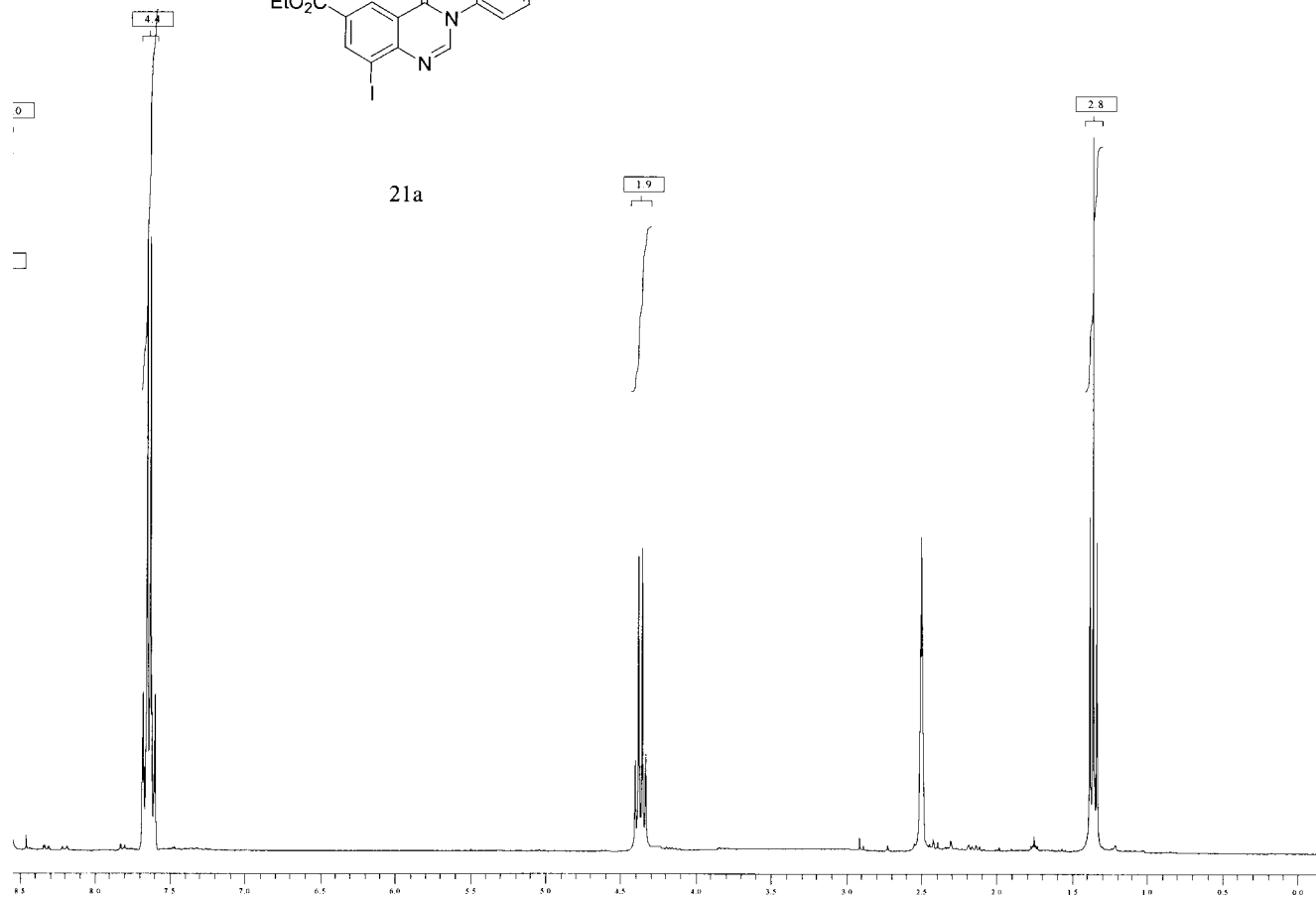


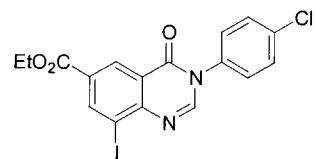
1c



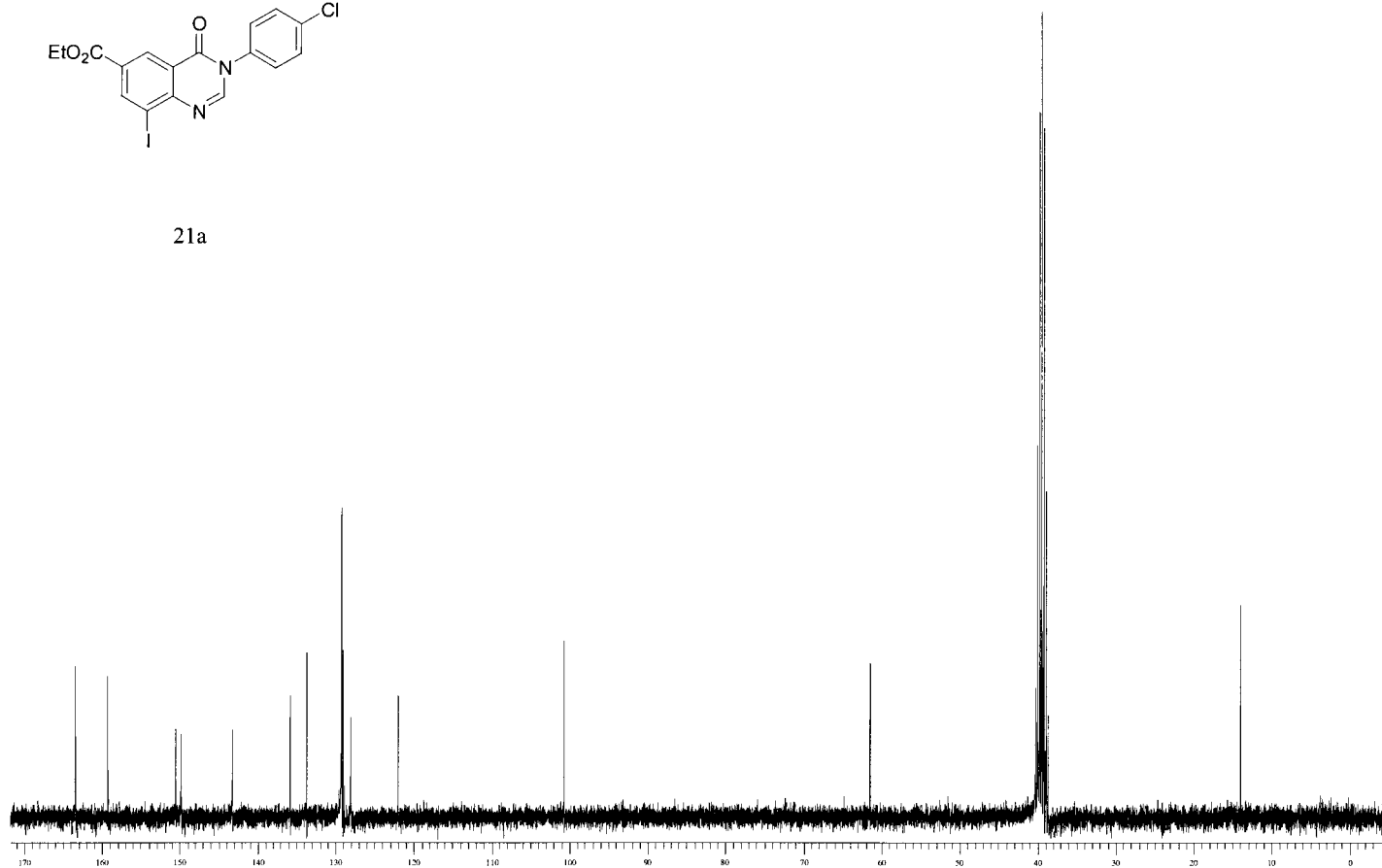


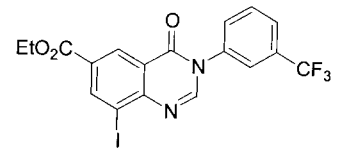
21a



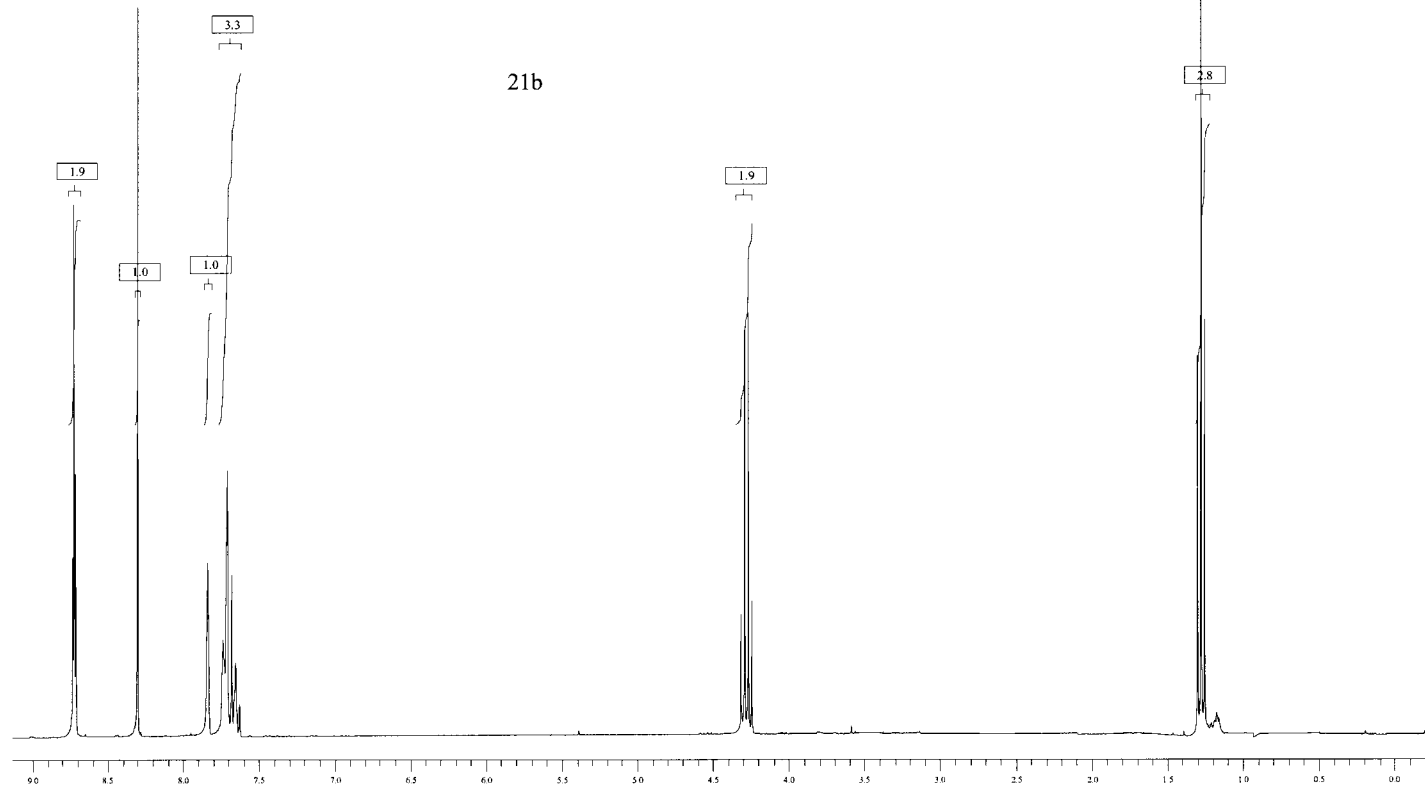


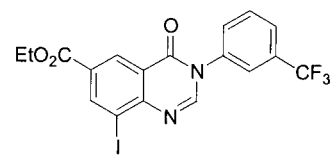
21a



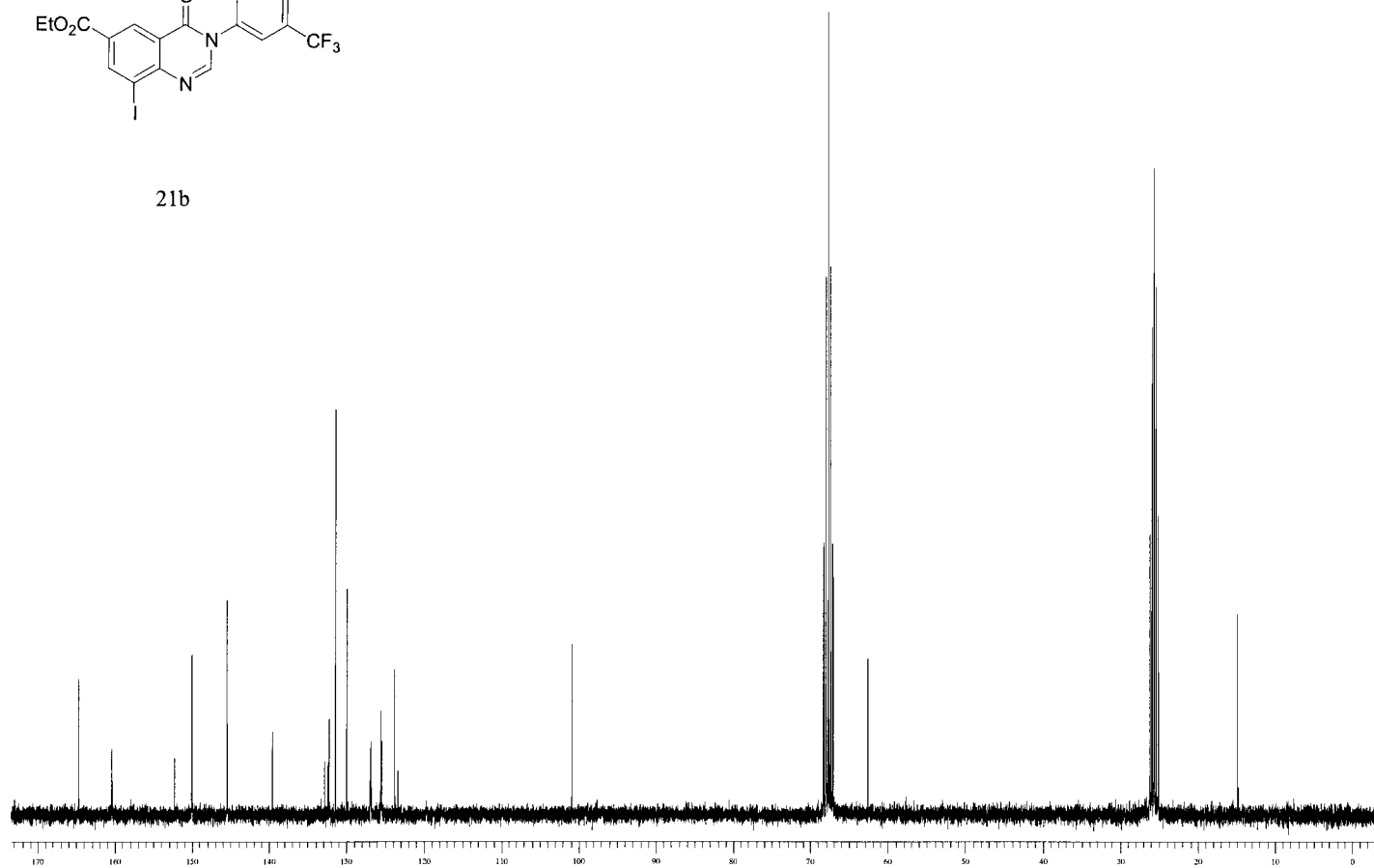


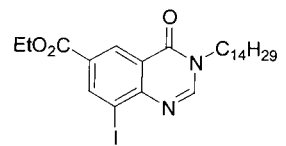
21b



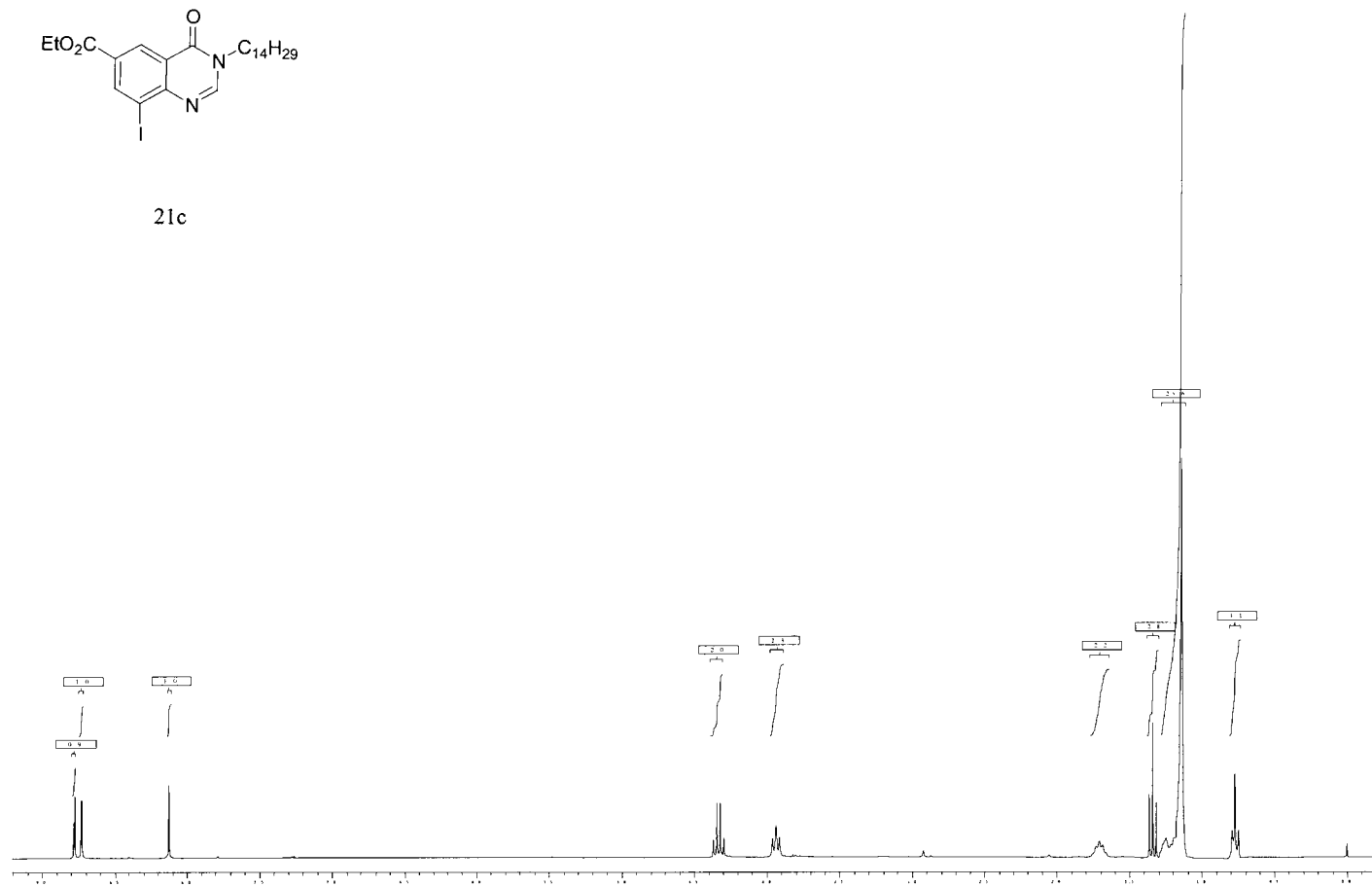


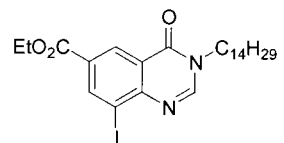
21b



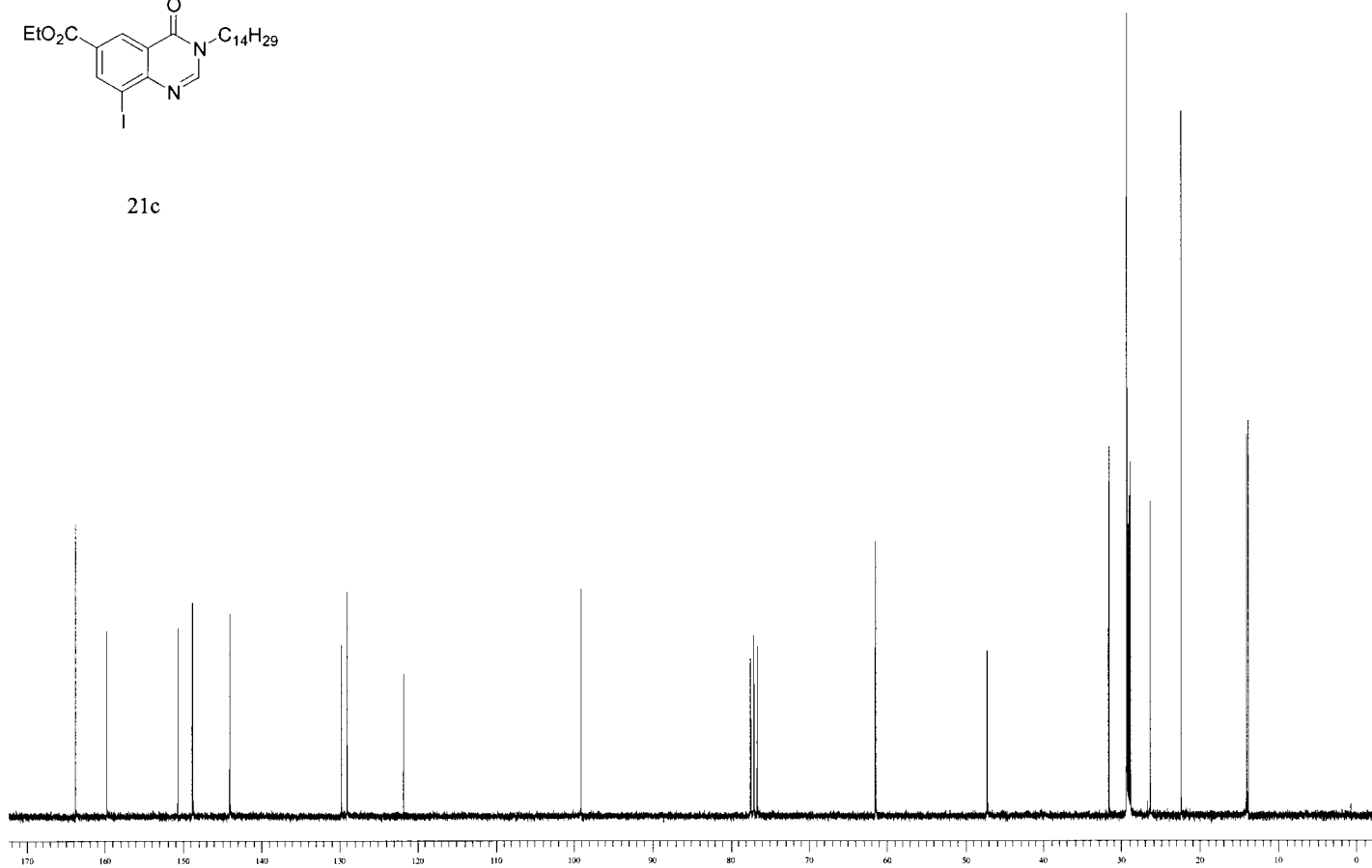


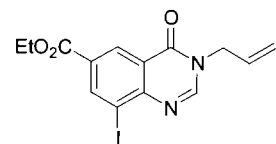
21c



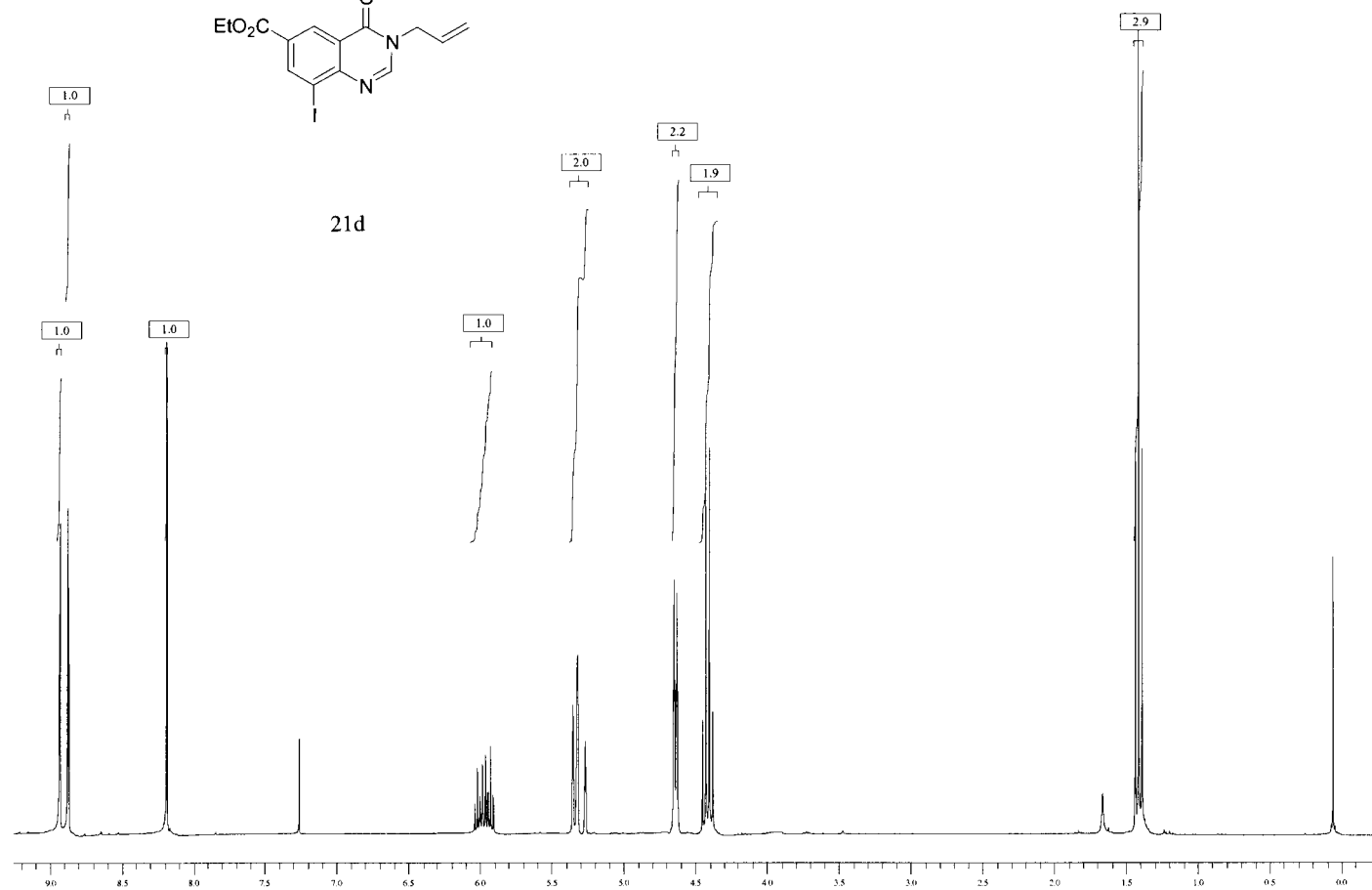


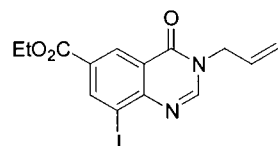
21c



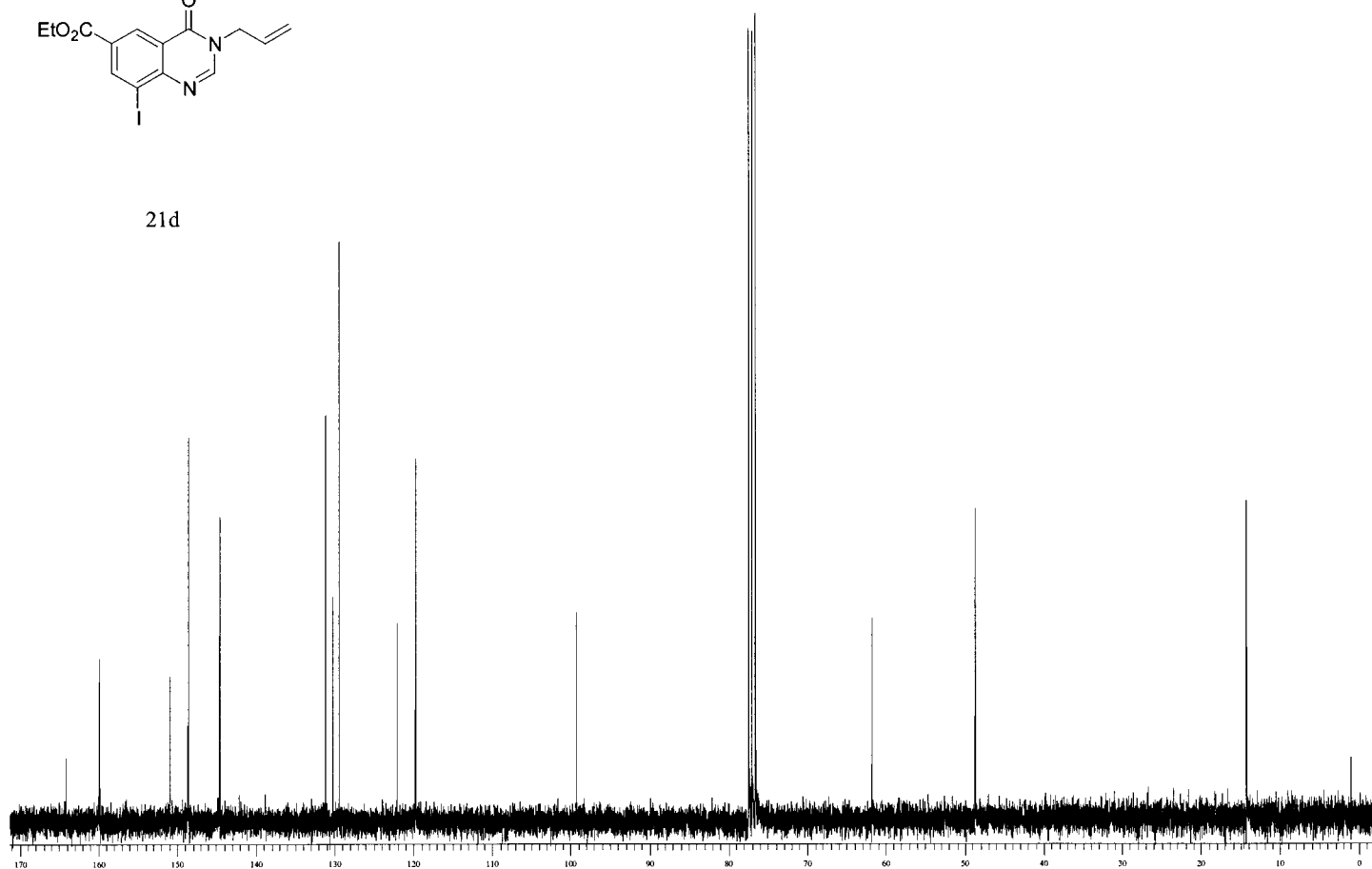


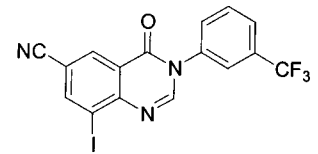
21d



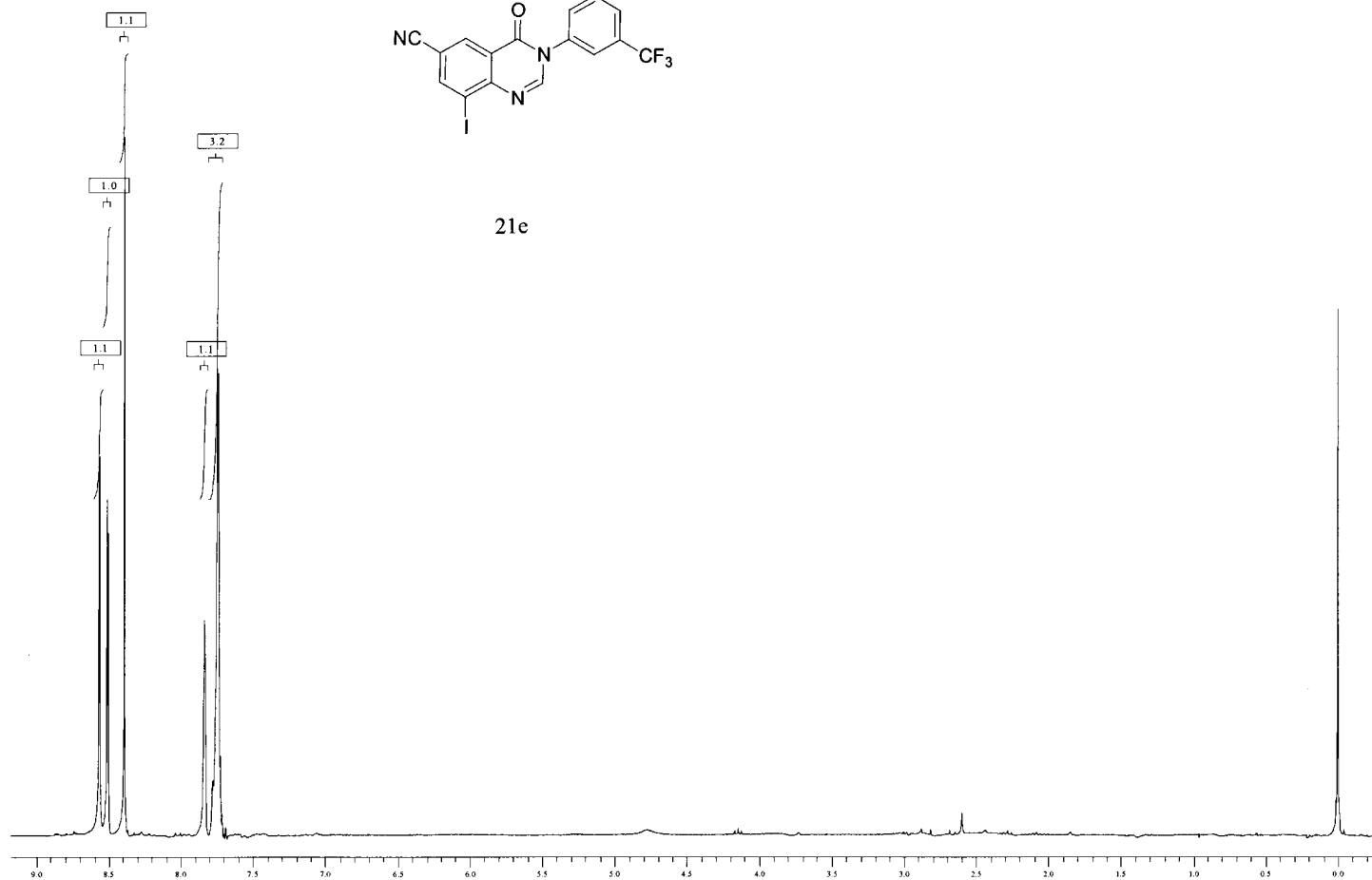


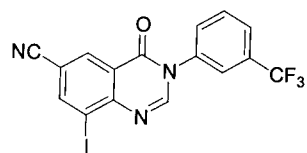
21d



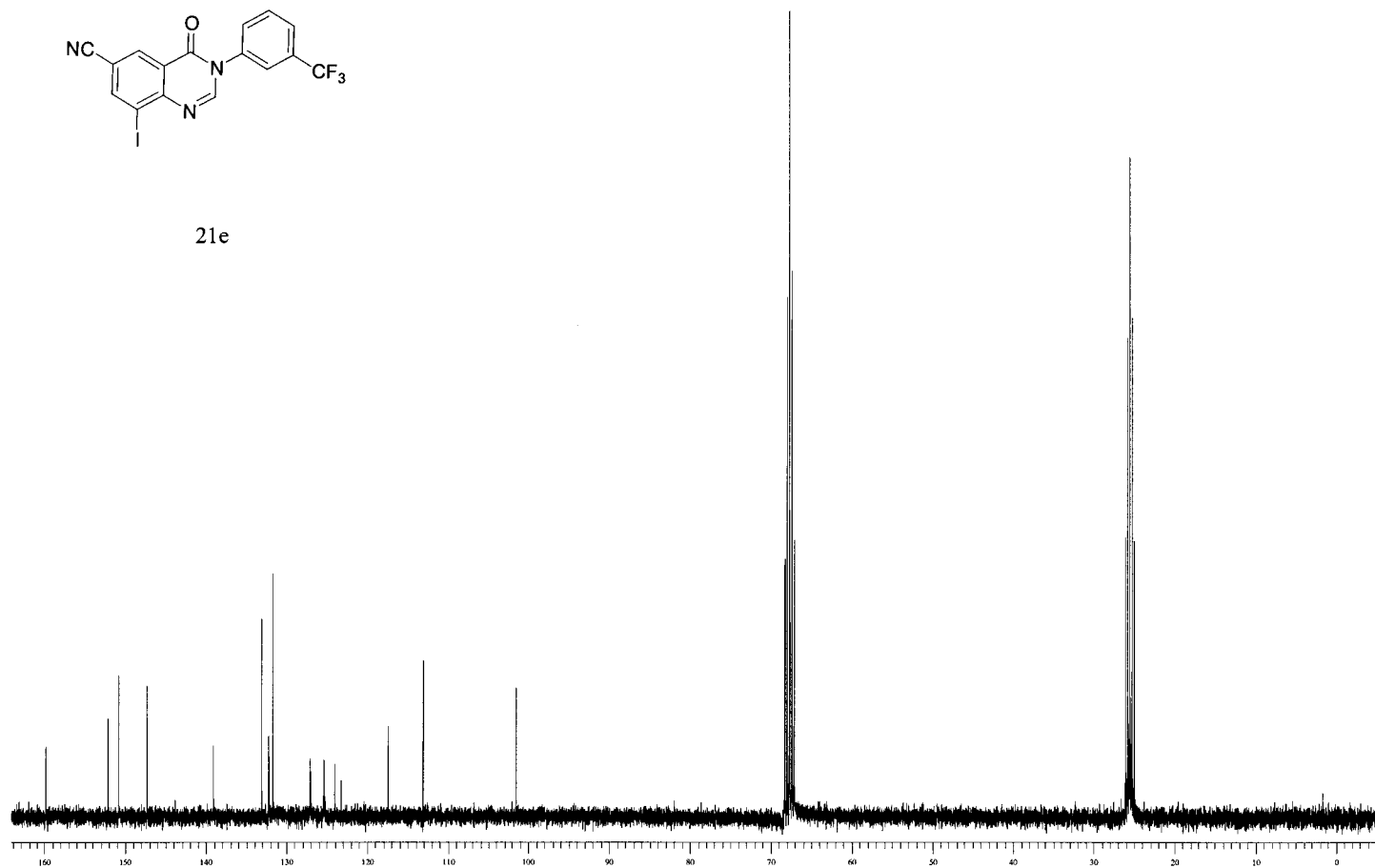


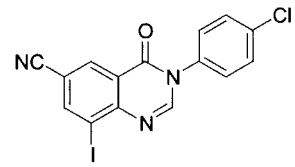
21e



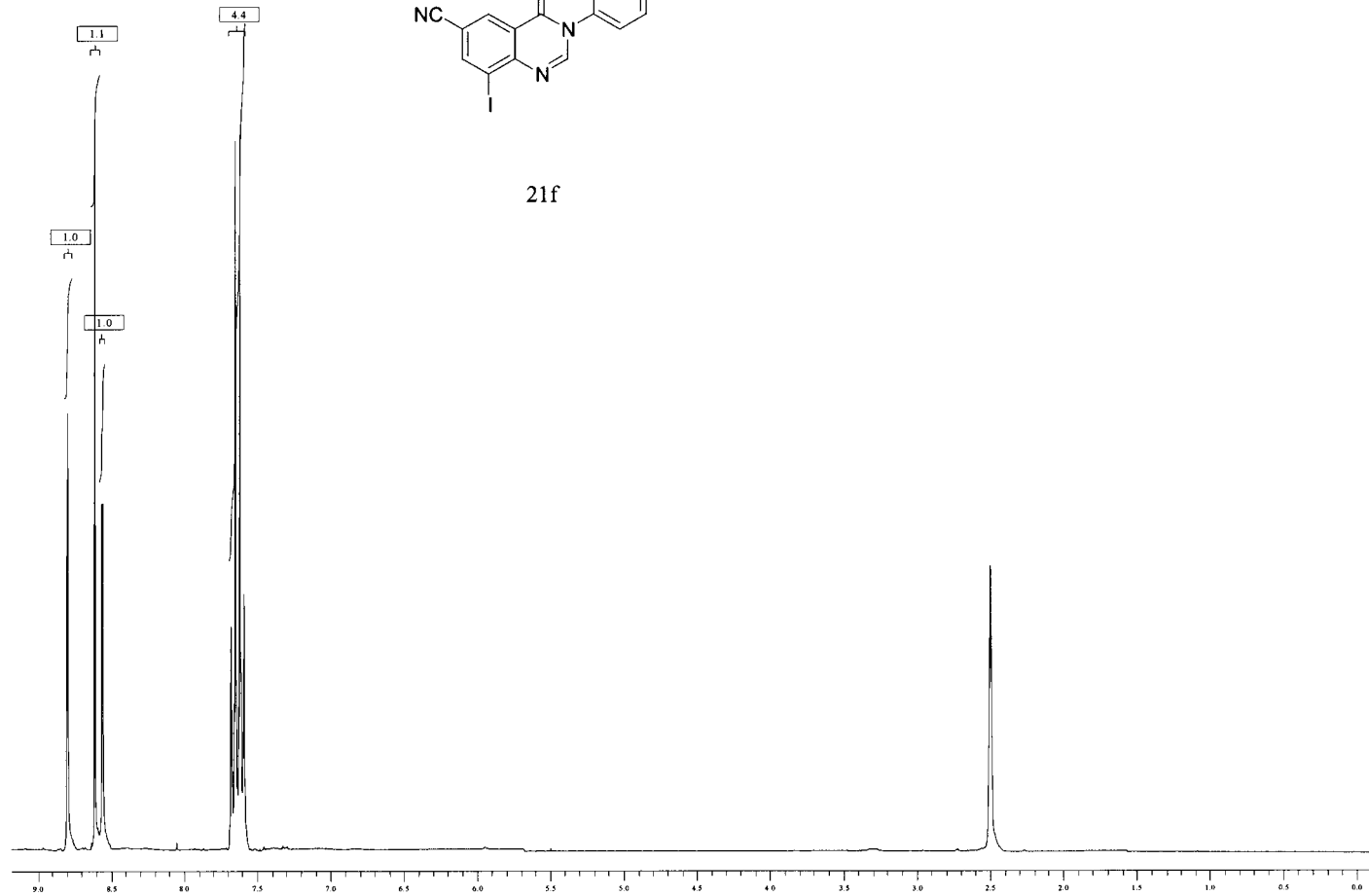


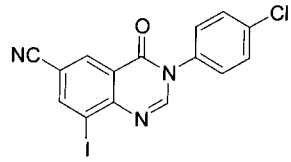
21e



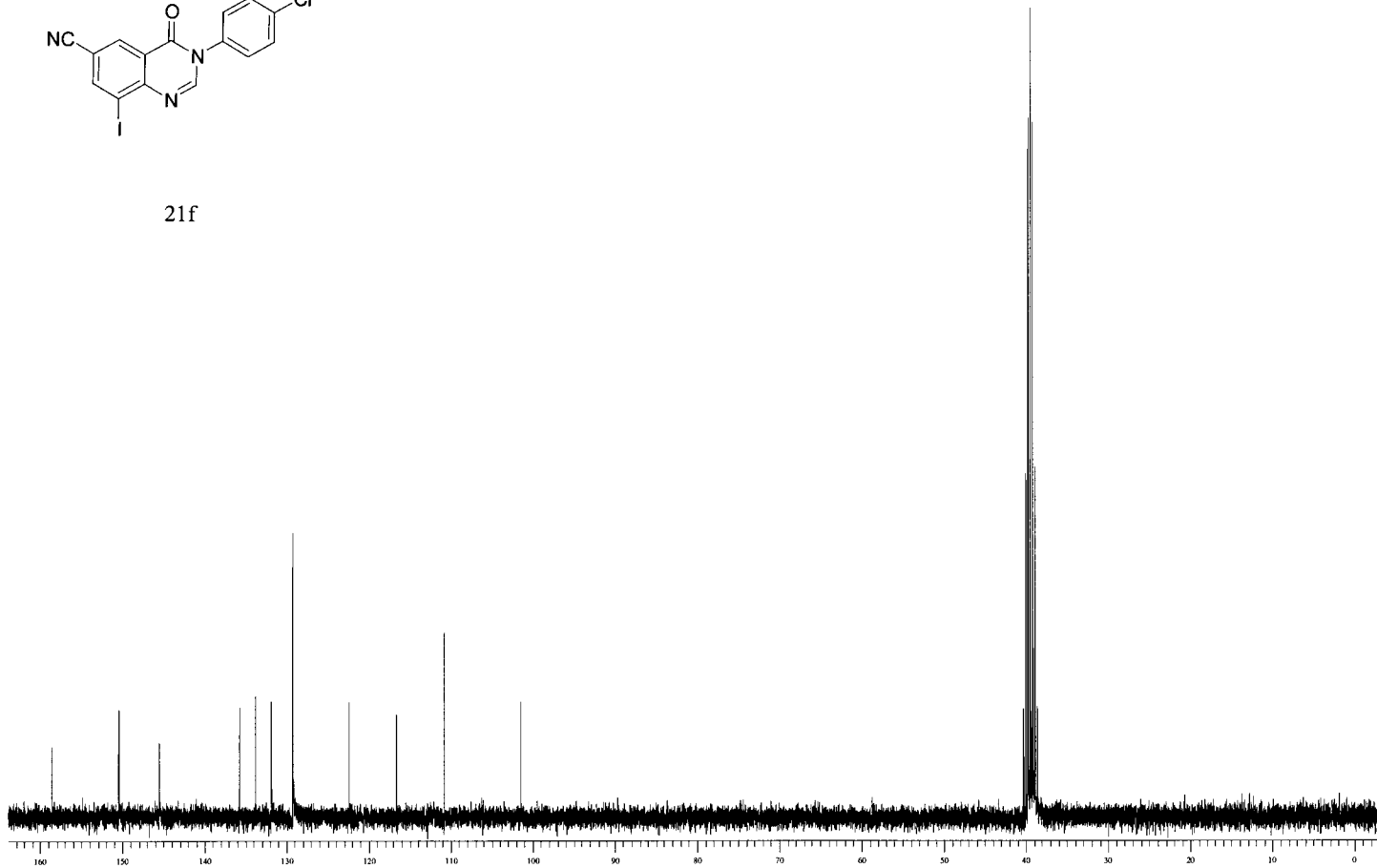


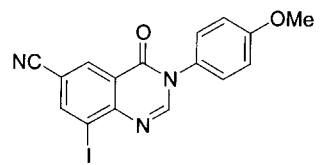
21f



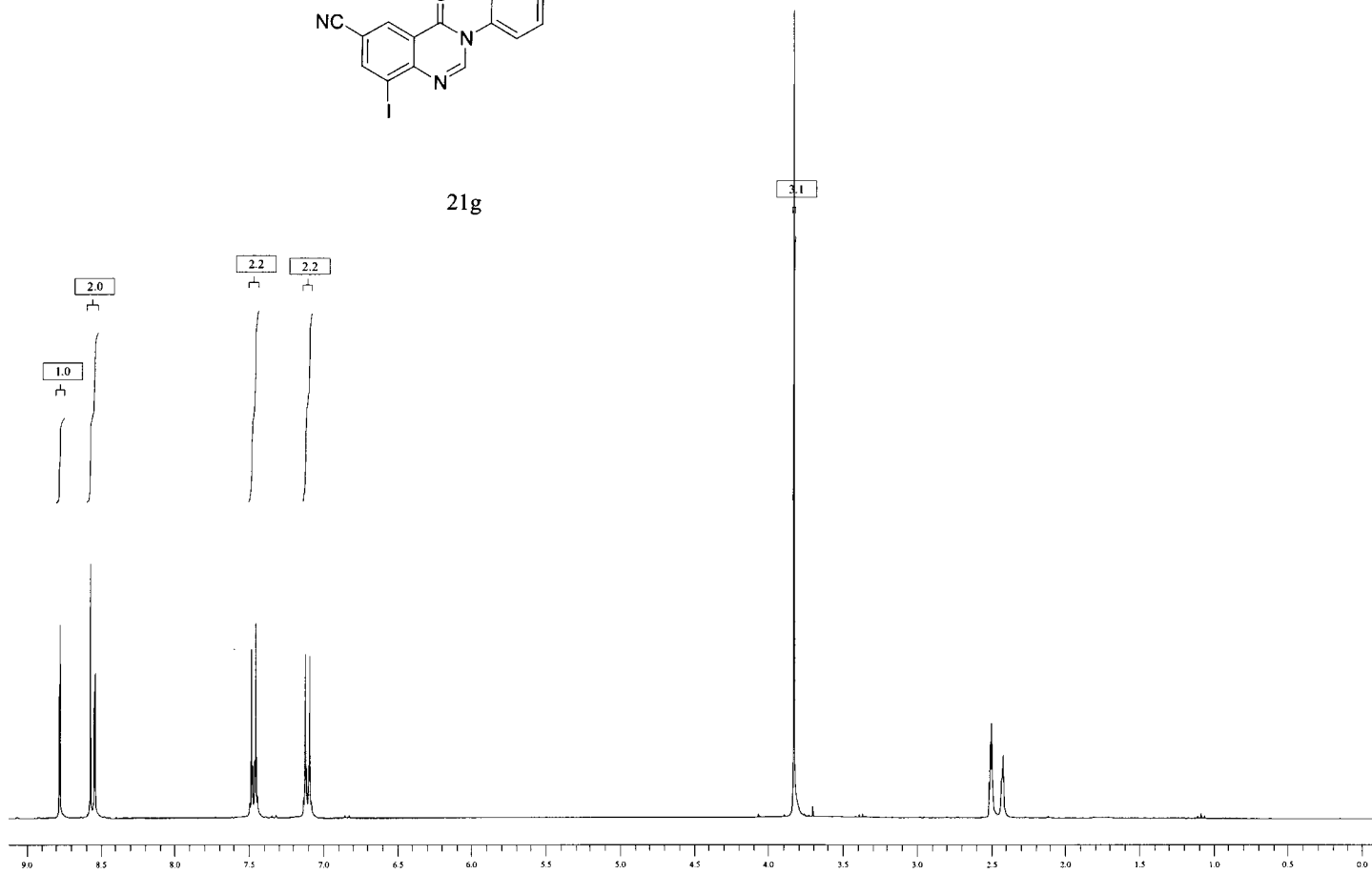


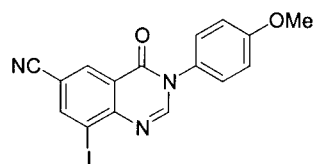
21f



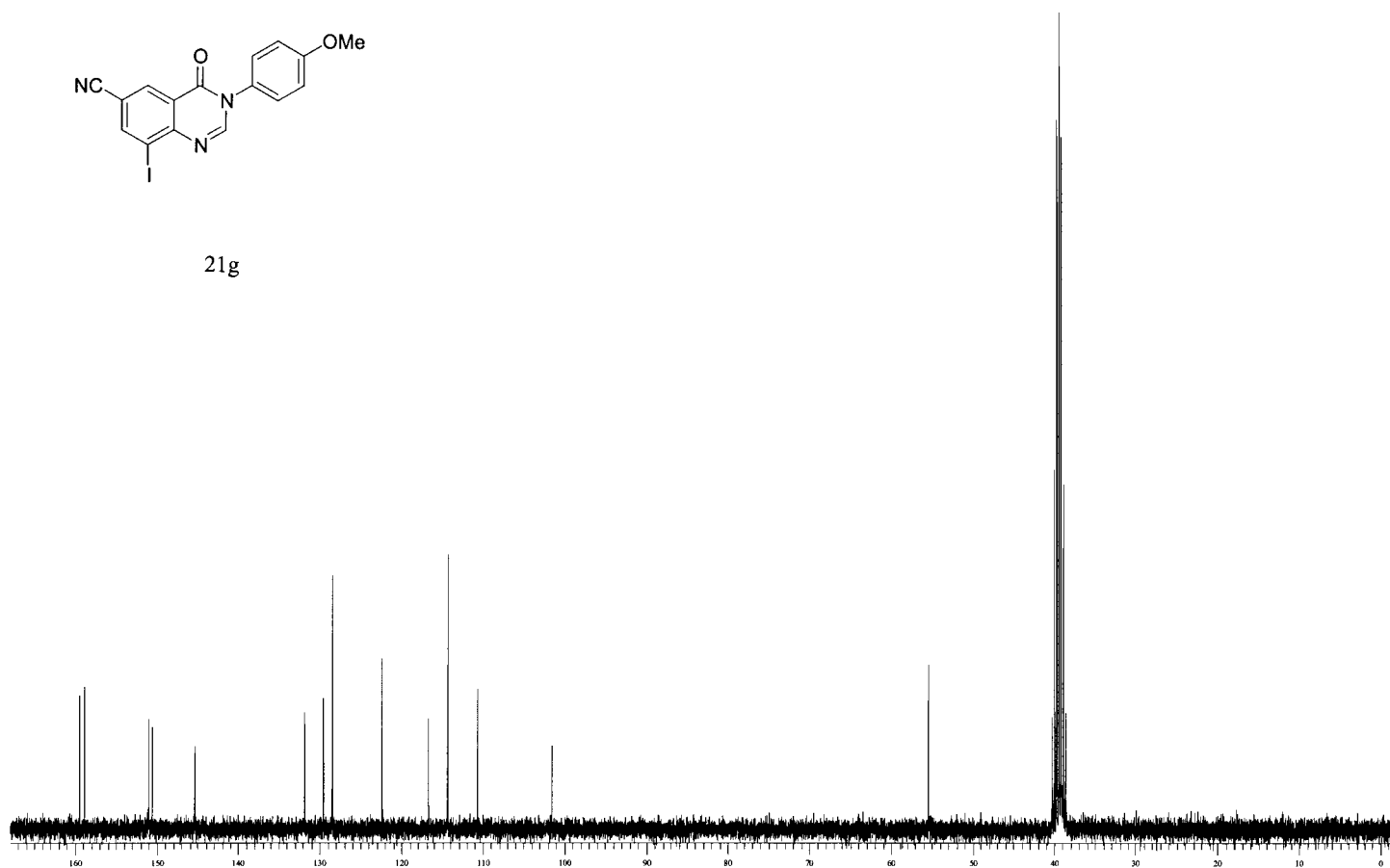


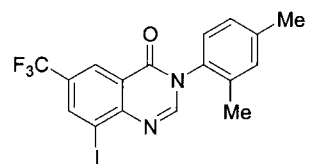
21g



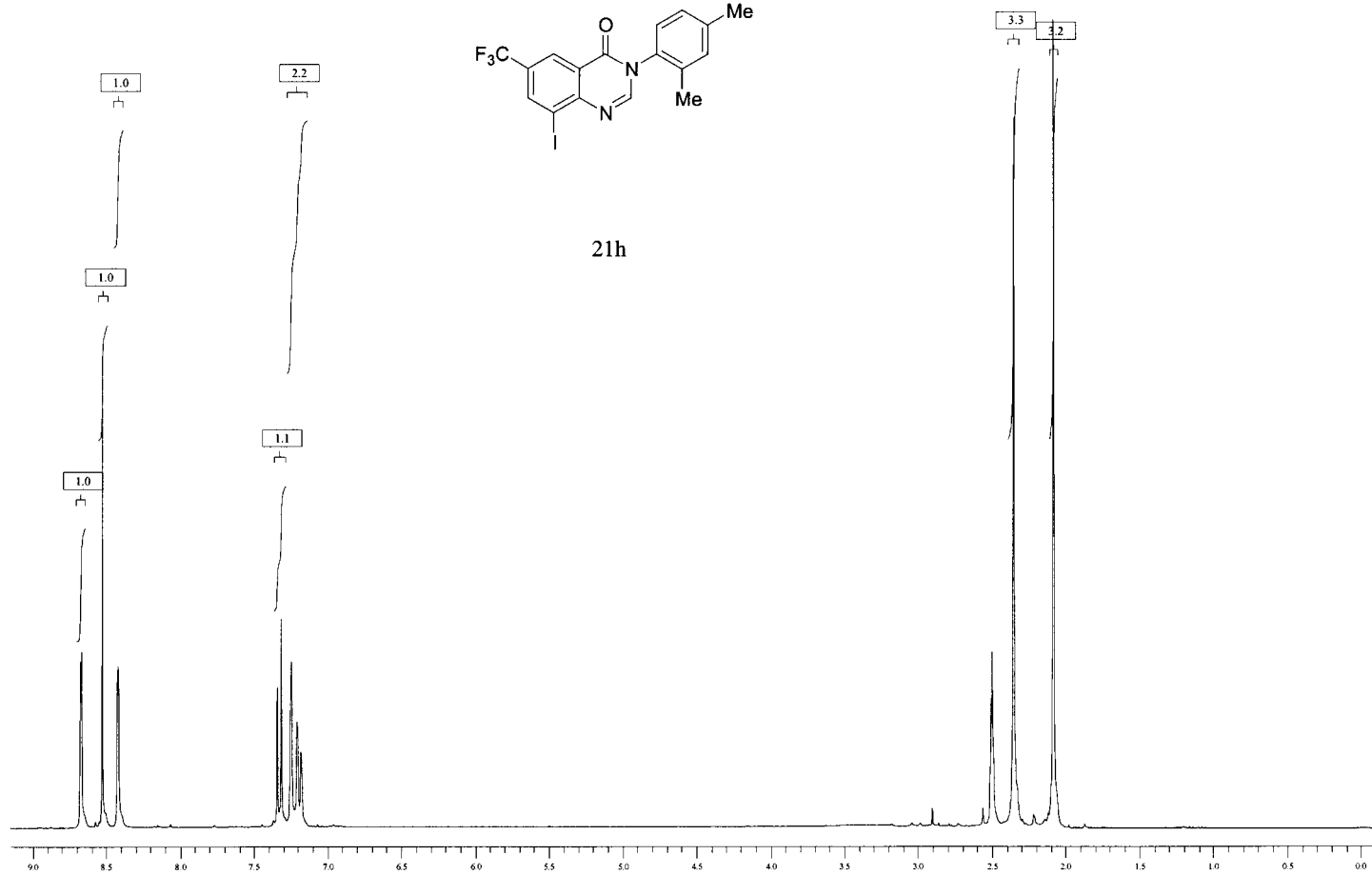


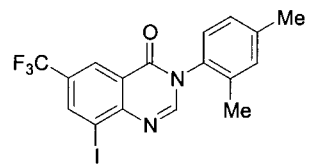
21g



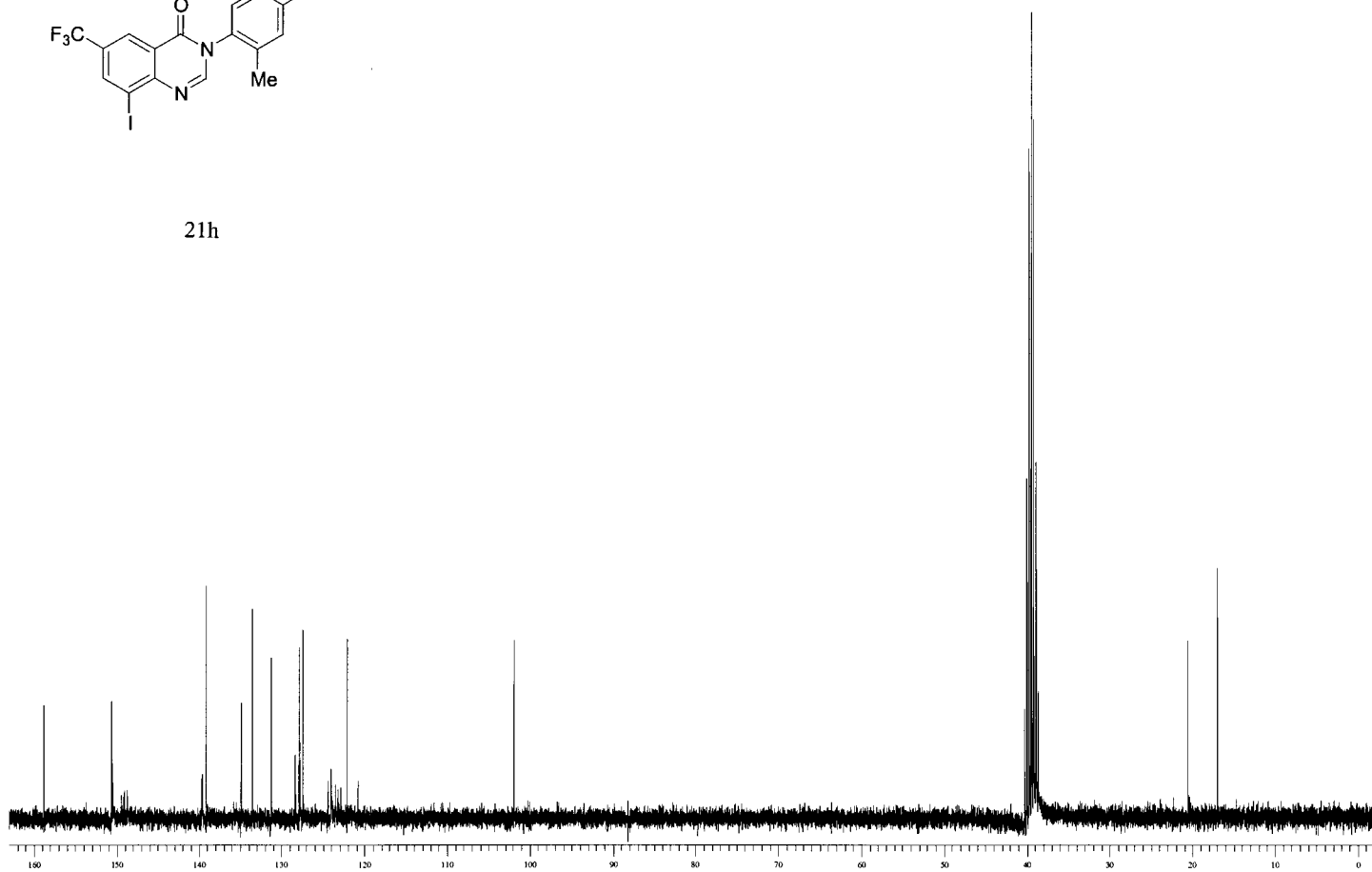


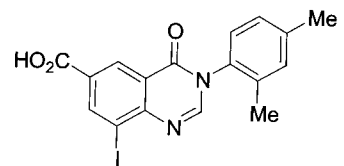
21h



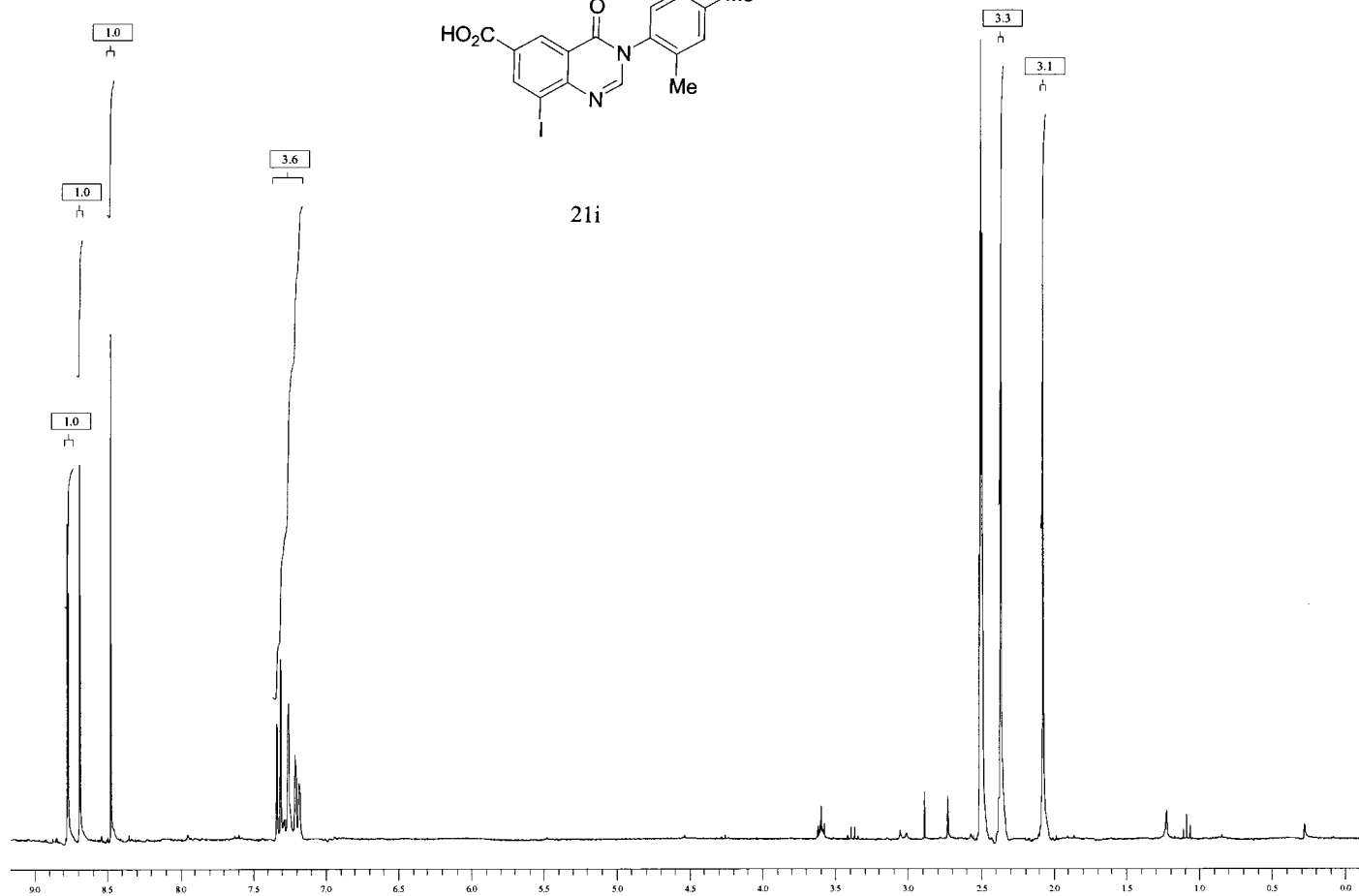


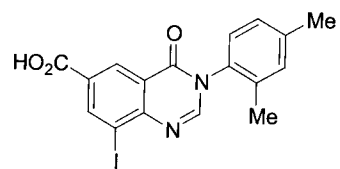
21h



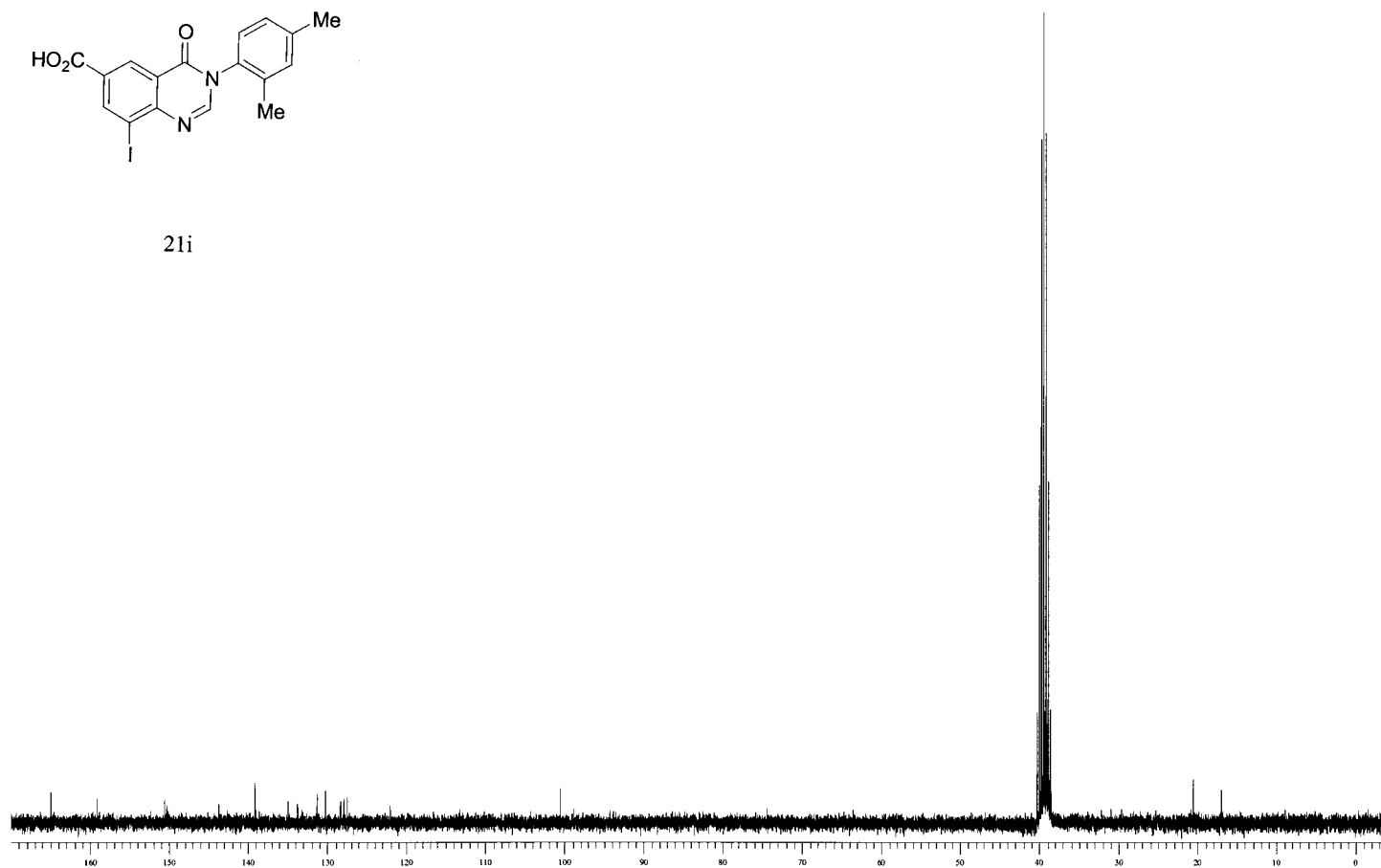


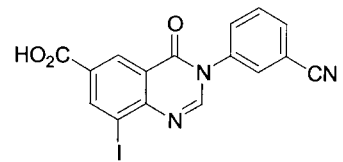
21i



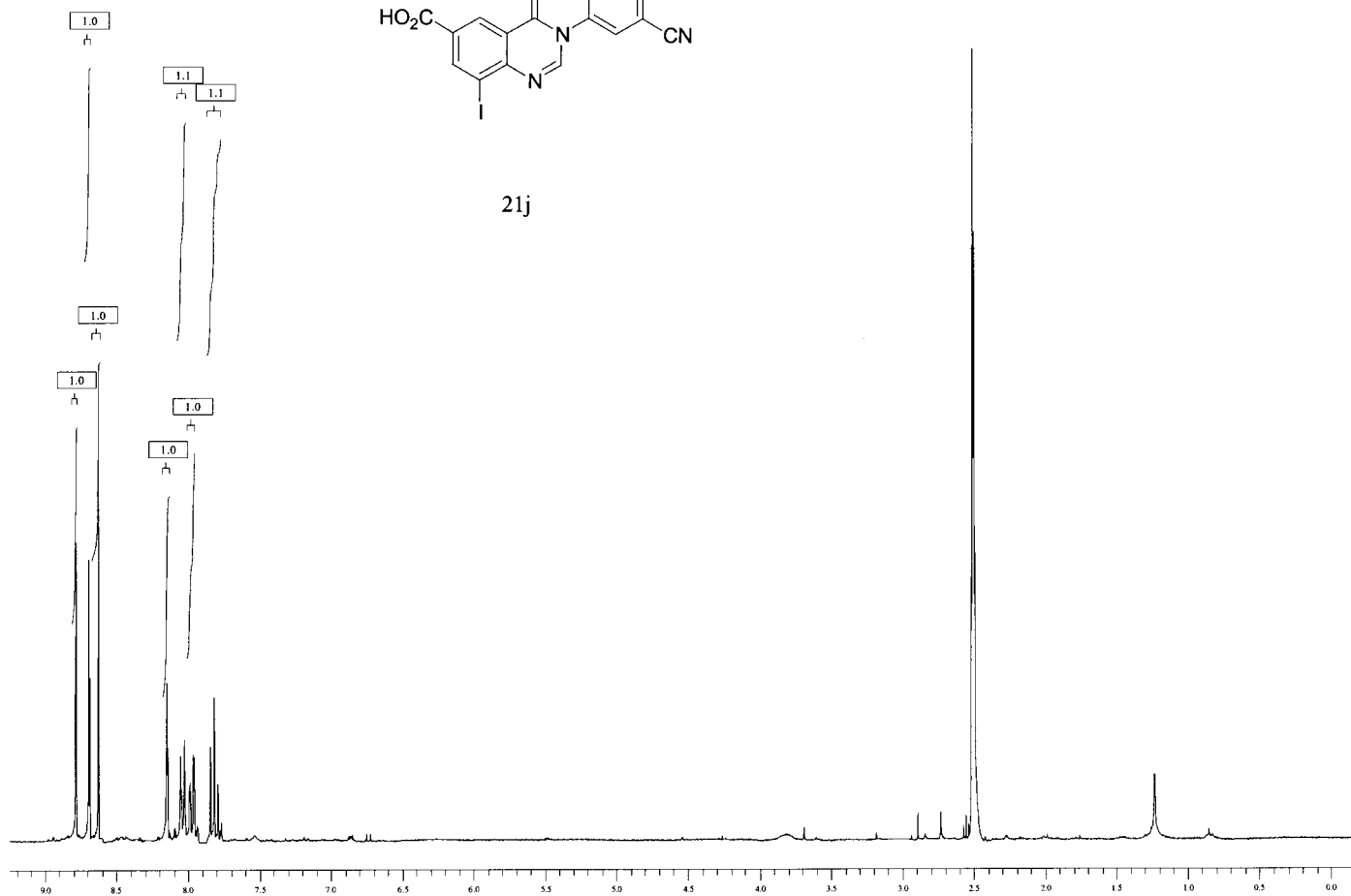


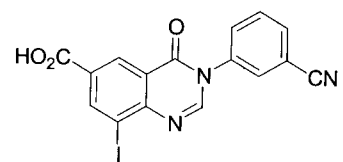
21i



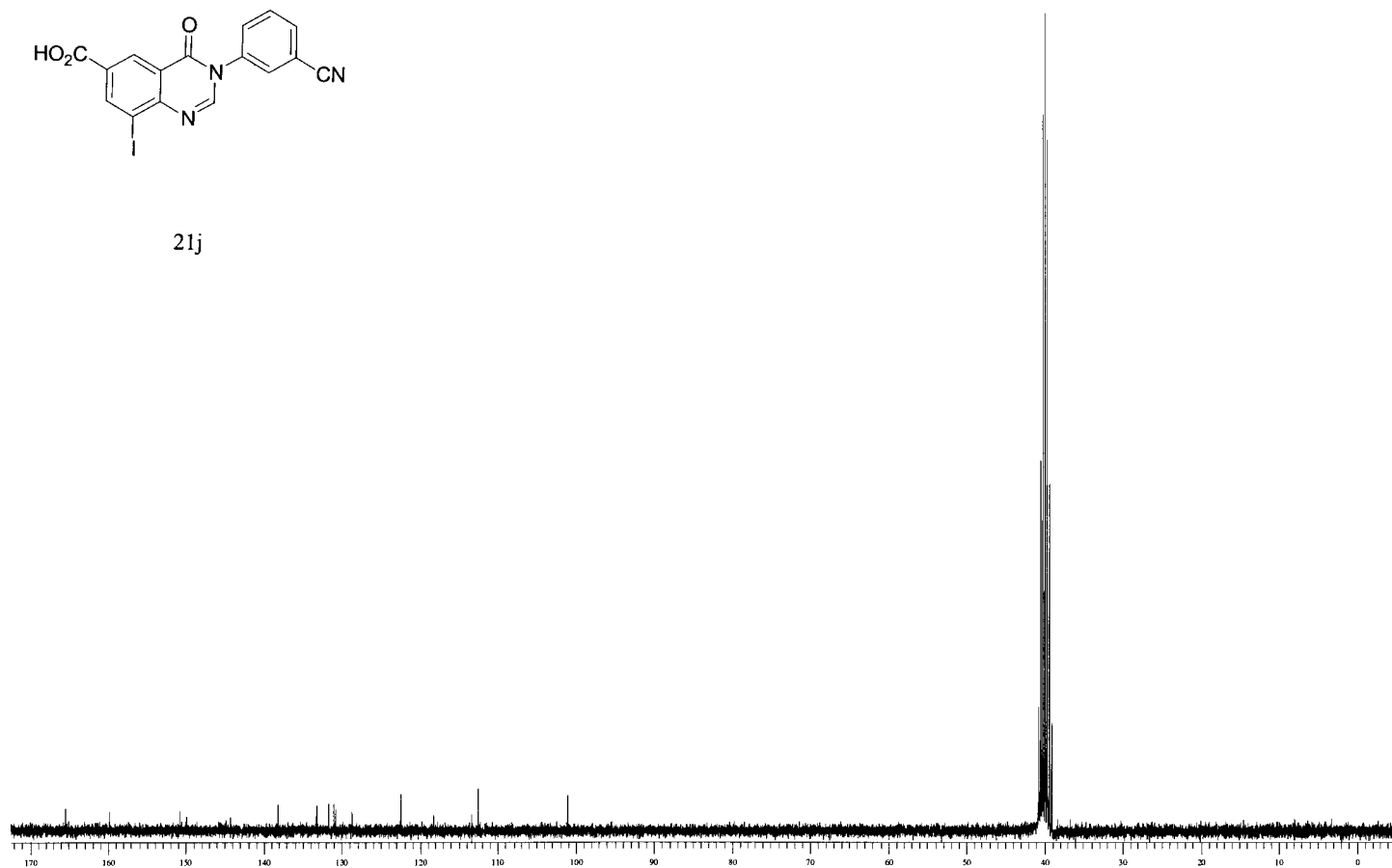


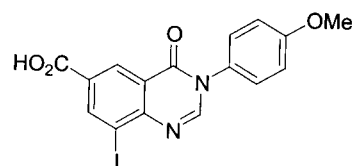
21j



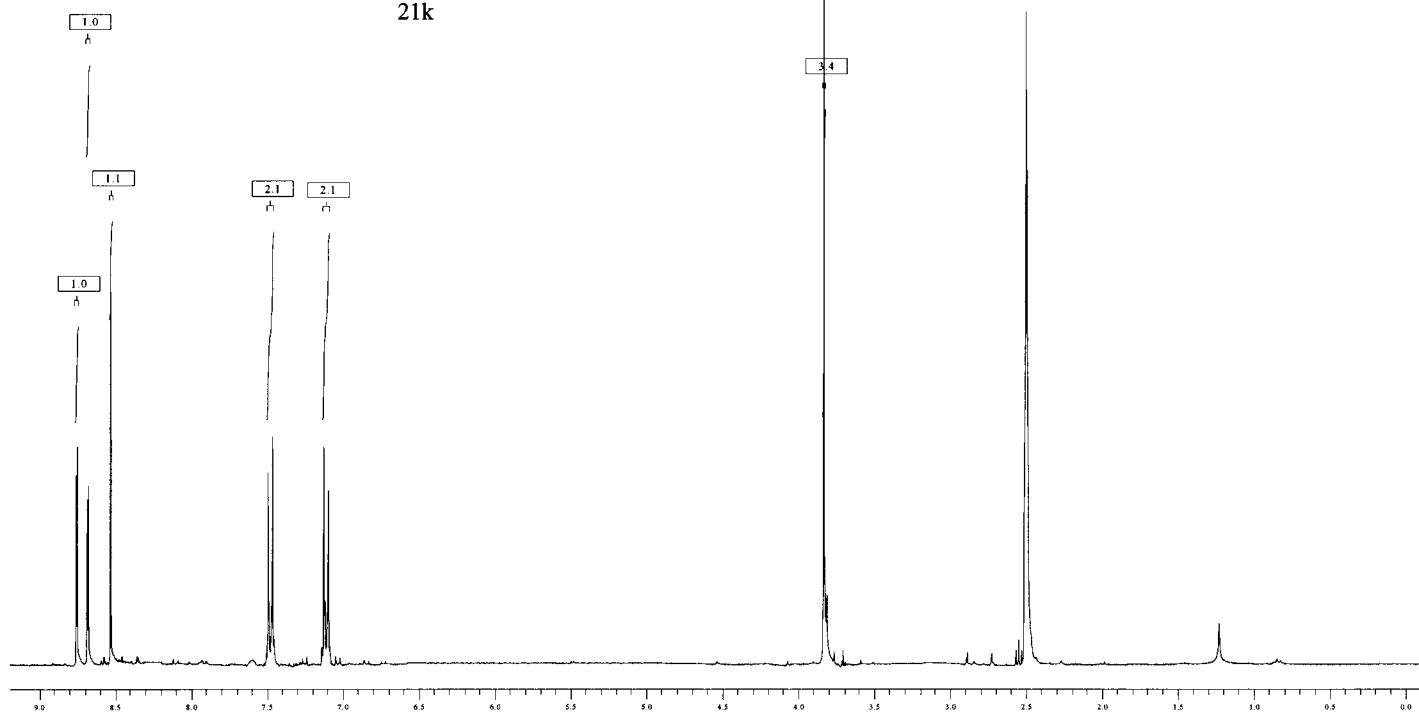


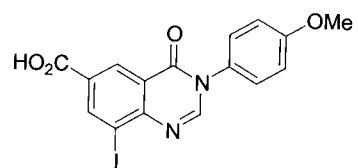
21j



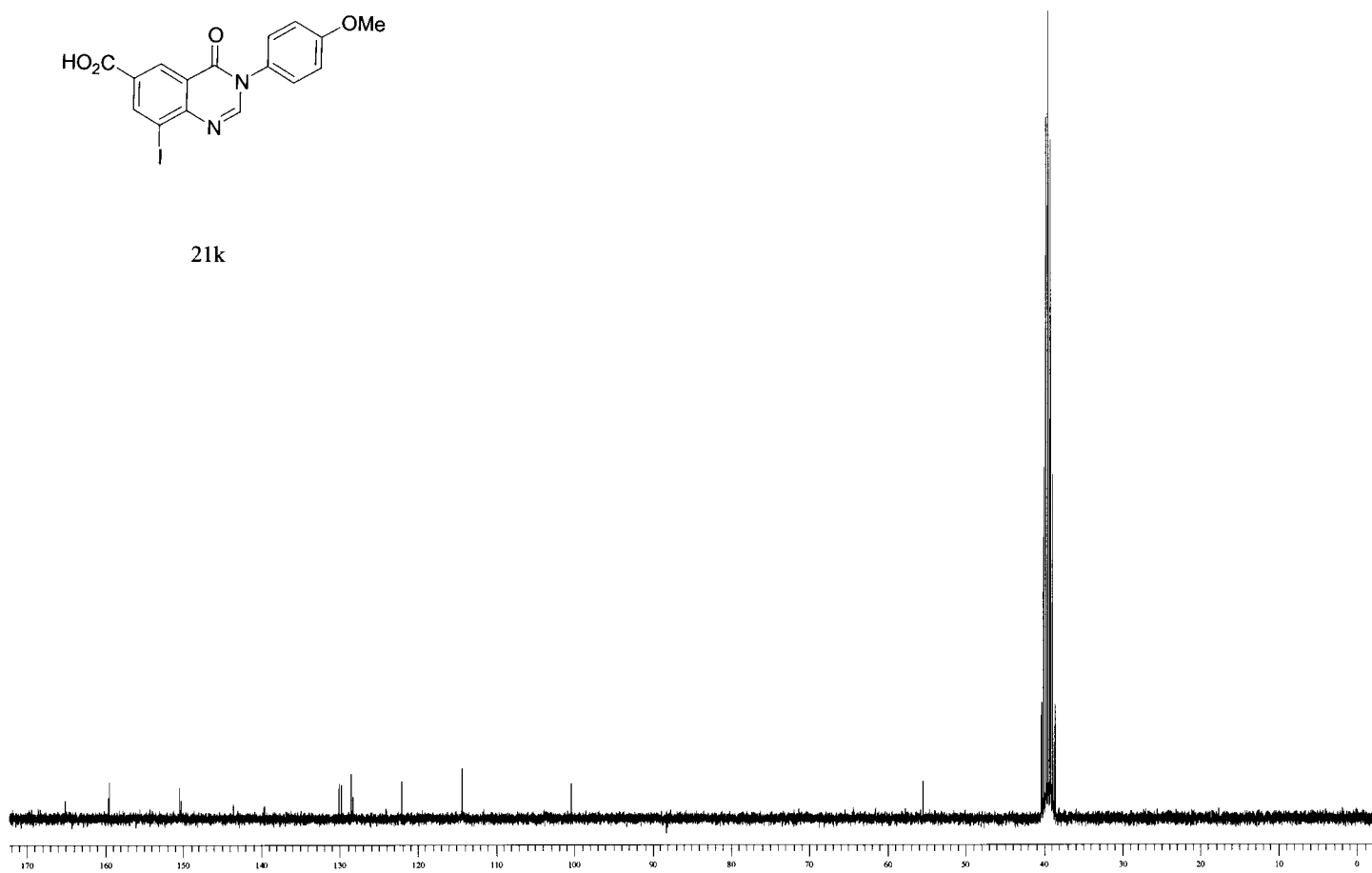


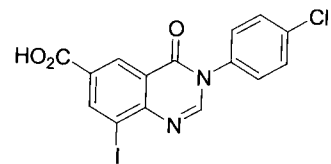
21k



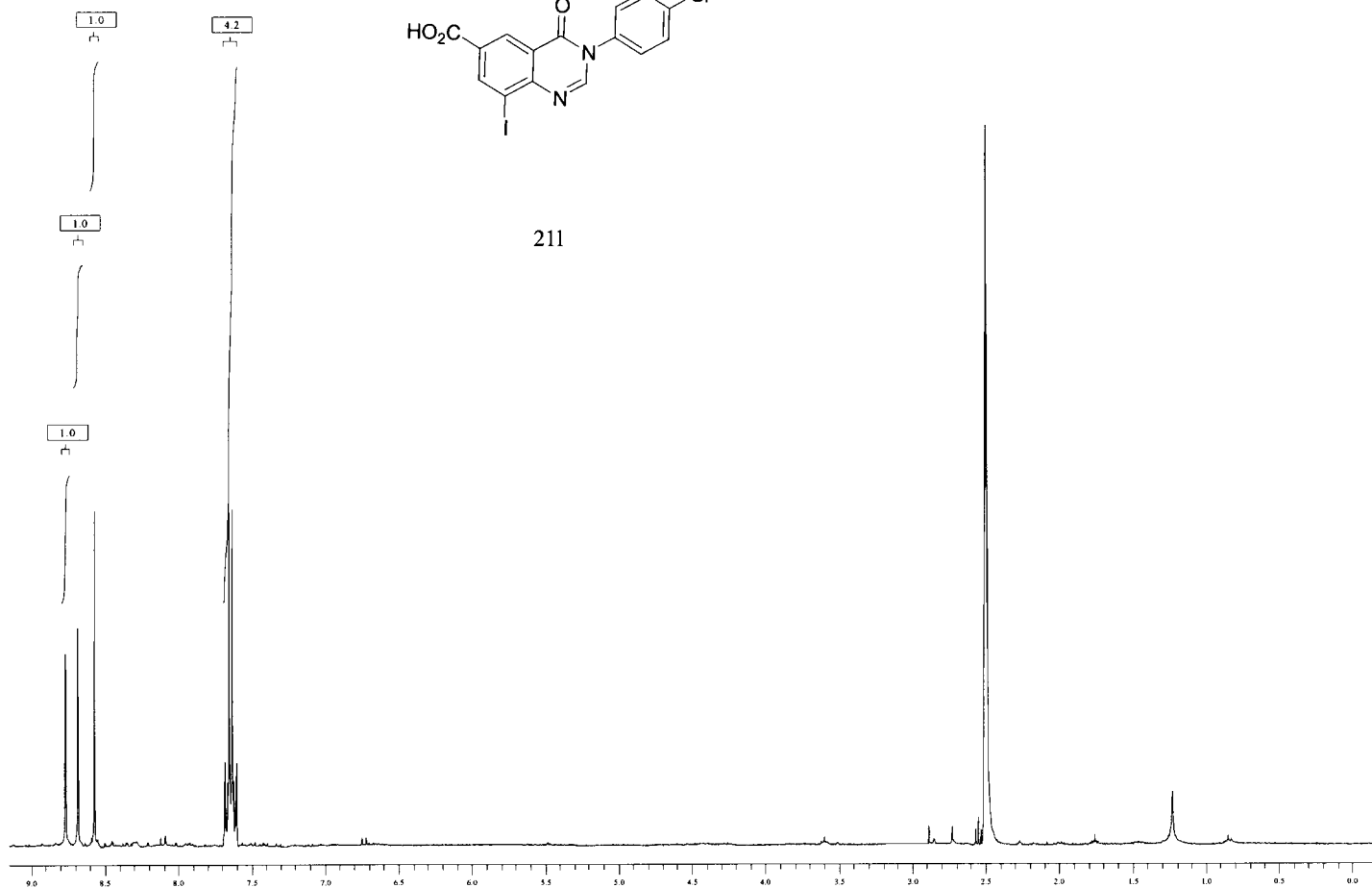


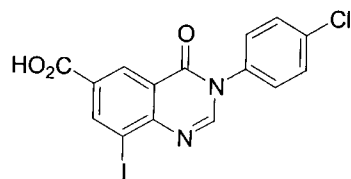
21k





211





211

